

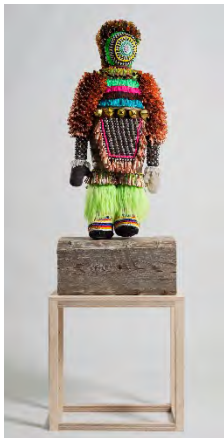
OUR FREEDOM IS WORTH MORE THAN OUR PAIN



Jeffrey Gibson (Mississippi Band Choctaw/Cherokee), *OUR FREEDOM IS WORTH MORE THAN OUR PAIN*, 2017.

Repurposed punching bags, glass beads, artificial sinew, acrylic felt, steel and brass; 114 × 71 × 42 in. Collection of Vicki and Kent Logan. Image courtesy of Jeffrey Gibson Studio and Roberts Projects, Los Angeles, California. Photograph by Peter Mauney.

Like A Hammer



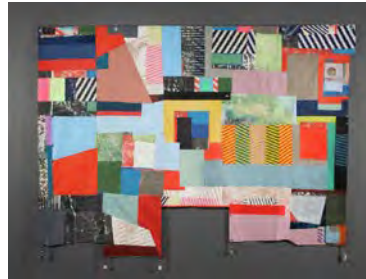
Jeffrey Gibson (Mississippi Band Choctaw/Cherokee), *Like A Hammer*, 2014. Elk hide, glass beads, artificial sinew, wool blanket, metal studs, steel, found pinewood block, and fur; 56 × 24 × 11 in. Collection of Tracy Richelle High and Roman Johnson, courtesy of Marc Straus Gallery, New York. Image courtesy of Jeffrey Gibson Studio and Roberts Projects, Los Angeles, California. Photograph by Peter Mauney.

Freedom



Jeffrey Gibson (Mississippi Band Choctaw/Cherokee), *Freedom*, 2013. Repurposed tipi poles, rawhide lacing, artificial sinew, buffalo hide, acrylic paint, wool, glass and plastic beads, sterling silver, turquoise, and quartz; 21 × 9-1/2 × 5-1/2 ft. Gift from Vicki and Kent Logan to the Collection of the Denver Art Museum. Image courtesy of Jeffrey Gibson Studio and Marc Straus Gallery, New York. Photograph by Glenn Castellano.

Late Fragment (after Carver)



Jeffrey Gibson (Mississippi Band Choctaw/Cherokee), *Late Fragment (after Carver)*, 2012. Recycled painting, acrylic paint, steel studs, grommets, artificial sinew, glass beads, and agates; 84 × 110 in. Gift from Vicki and Kent Logan to the Collection of the Denver Art Museum. Photography courtesy of Denver Art Museum.

CAN'T TAKE MY EYES OFF OF YOU



Jeffrey Gibson (Mississippi Band Choctaw/Cherokee), *CAN'T TAKE MY EYES OFF OF YOU*, 2015. High fire glazed ceramic, repurposed tipi poles, wool, acrylic paint, wool blanket, glass beads, artificial sinew, copper jingles, and nylon fringe; 72 × 29 × 38 in. Collection of Vicki and Kent Logan. Image courtesy of Jeffrey Gibson Studio and Roberts Projects, Los Angeles, California. Photograph by Peter Mauney.

All Things Big and Small



Jeffrey Gibson (Mississippi Band Choctaw/Cherokee), *All Things Big and Small*, 2016. Acrylic paint and graphite on canvas, 70 × 57-1/8 in. Collection of Lisa and Stuart Ginsberg. Image courtesy of Jeffrey Gibson Studio and Roberts Projects, Los Angeles, California. Photograph by Peter Mauney.

AMERICAN HISTORY (JB)



Jeffrey Gibson (Mississippi Band Choctaw/Cherokee), *AMERICAN HISTORY (JB)*, 2015. Wool, steel studs, glass beads, artificial sinew, metal jingles, acrylic yarn, nylon fringe, and canvas; 89 × 66 × 5 in. Lent by the Lewis Family. Image courtesy of Jeffrey Gibson Studio and Roberts Projects, Los Angeles, California. Photograph by Peter Maoney.

YOU CAN FEEL IT ALL OVER



Jeffrey Gibson (Mississippi Band Choctaw/Cherokee), *YOU CAN FEEL IT ALL OVER*, 2015. Repurposed punching bag, glass beads, artificial sinew, steel; 41 × 14 × 14 in. From the Collection of Teresa and Lorenzo Fertitta. Image courtesy of Jeffrey Gibson Studio and Roberts Projects, Los Angeles, California. Photograph by Peter Maoney.

I PUT A SPELL ON YOU



Jeffrey Gibson (Mississippi Band Choctaw/Cherokee), *I PUT A SPELL ON YOU*, 2015. Repurposed punching bag, glass beads, artificial sinew, and steel; 40 × 14 × 14 in. Collection of the Nasher Museum of Art at Duke University, Durham, North Carolina. Museum purchase, 2015.11.1. Image courtesy of Jeffrey Gibson Studio and Roberts Projects, Los Angeles, California. Photograph by Peter Maoney.

ONE BECOMES THE OTHER



Jeffrey Gibson (Mississippi Band Choctaw/Cherokee), *ONE BECOMES THE OTHER*, 2015. Repurposed wool army blanket, repurposed punching bag, glass beads, plastic beads, steel studs, artificial sinew, quartz crystals, copper cones, nylon fringe, steel, acrylic paint; 73 × 16-1/2 × 16-1/2 in. Private collection, courtesy of Marc Straus Gallery, New York. Image courtesy of Jeffrey Gibson Studio and Roberts Projects, Los Angeles, California. Photograph by Peter Maoney.

Raven



Jeffrey Gibson (Mississippi Band Choctaw/Cherokee), *Raven*, 2016. Acrylic paint on canvas; 84 × 108 × 11-1/2 in. Collection of Jessica & Greg Ransom, courtesy of Marc Straus Gallery, New York. Image courtesy of Jeffrey Gibson Studio and Roberts Projects, Los Angeles, California. Photograph by Peter Maoney.

Someone Great Is Gone



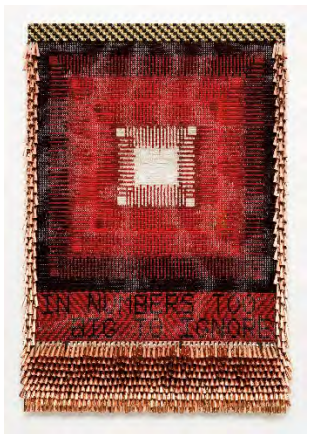
Jeffrey Gibson (Mississippi Band Choctaw/Cherokee), *Someone Great Is Gone*, 2013. Elk hide, acrylic paint, graphite; 91 × 59 in. Private collection, New York, courtesy of Marc Straus Gallery, New York. Image courtesy of Jeffrey Gibson Studio and Roberts Projects, Los Angeles, California. Photograph by Peter Maoney.

THE DIFFERENCE BETWEEN YOU + ME



Jeffrey Gibson (Mississippi Band Choctaw/Cherokee), *THE DIFFERENCE BETWEEN YOU + ME*, 2015. Glass beads, wool, canvas, artificial sinew, steel studs, and copper cones over wood panel; 40 × 30 in. Courtesy of Marc Straus Gallery, New York. Image courtesy of Jeffrey Gibson Studio and Roberts Projects, Los Angeles, California. Photograph by Peter Mauney.

IN NUMBERS TOO BIG TO IGNORE



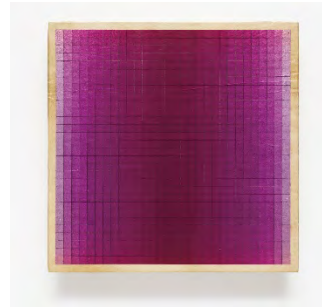
Jeffrey Gibson (Mississippi Band Choctaw/Cherokee), *IN NUMBERS TOO BIG TO IGNORE*, 2016. Glass beads, artificial sinew, copper jingles, metal studs, and repurposed wool army blanket over wood panel; 61.5 × 43 in. Fried Family Collection, courtesy of Marc Straus Gallery, New York. Image courtesy of Jeffrey Gibson Studio and Roberts Projects, Los Angeles, California. Photograph by Peter Mauney.

MAKE NO SMALL PLANS



Jeffrey Gibson (Mississippi Band Choctaw/Cherokee), *MAKE NO SMALL PLANS*, 2017. Glass beads on acrylic wool and canvas over wood panel, and steel studs; 40 × 30 in. Collection of Ian & Stacy Fleming, courtesy of Marc Straus Gallery, New York. Image courtesy of Jeffrey Gibson Studio and Roberts Projects, Los Angeles, California. Photograph by Peter Mauney.

Frequency



Jeffrey Gibson (Mississippi Band Choctaw/Cherokee), *Frequency*, 2015. Graphite and acrylic paint on deer hide over wood panel; 16 × 16 × 2-1/2 in. Private collection, Australia, courtesy of Marc Straus Gallery, New York. Image courtesy of Jeffrey Gibson Studio and Roberts Projects, Los Angeles, California. Photograph by Peter Mauney.

Quiver



Jeffrey Gibson (Mississippi Band Choctaw/Cherokee), *Quiver*, 2012. Deer hide, artificial sinew, beaded balls, neon light tube; 44 × 40 × 3 in. Collection of Vicki and Kent Logan. Image courtesy of Jeffrey Gibson Studio and Roberts Projects, Los Angeles, California. Photograph by Etienne Frossard.

Thinking of You



Jeffrey Gibson (Mississippi Band Choctaw/Cherokee), *Thinking of You*, 2015. Graphite and acrylic paint on rawhide over wood panel; 18 × 32 × 2-1/2 in. Private collection, courtesy of Marc Straus Gallery, New York. Image courtesy of Jeffrey Gibson Studio and Roberts Projects, Los Angeles, California. Photograph by Peter Mauney.



Jeffrey Gibson (Mississippi Band Choctaw/Cherokee), *WHAT WE WANT, WHAT WE NEED*, 2014.

Repurposed wool army blanket, glass beads, tin jingles, nylon fringe, acrylic yarn, artificial sinew, copper-coated wire, copper cones, turquoise, amethyst, quartz crystals, plastic sequins, cowrie shells, horn, druzy quartz beads, dentalium, malachite, stone arrowheads, and nickel beads; 68-1/2 x 128-1/2 x 8 in. Courtesy of Jeffrey Gibson Studio and Roberts Projects, Los Angeles, California. Image courtesy of Jeffrey Gibson Studio and Roberts Projects, Los Angeles, California. Photograph by Peter Mauney.