

# DENVER ART MUSEUM

100 W. 14th Ave Pkwy | Denver, CO 80204  
720-865-5000 telephone | denverartmuseum.org

## IMAGE HIGHLIGHTS

### *Claude Monet: The Truth of Nature*

MEDIA

Shadia Lemus, 720-913-0096

Jena Pruett, 720-913-0079

CONTACTS

slemus@denverartmuseum.org

jpruett@denverartmuseum.org

#### CLAUDE MONET

##### *View from Rouelles*



Claude Monet, *View from Rouelles*, 1858. Oil on canvas; 18-1/8 x 25-5/8 in (46 x 65 cm). Marunuma Art Park, Asaka.

#### CLAUDE MONET

##### *Boulevard des Capucines*



Claude Monet, *Boulevard des Capucines*, 1873-1874. Oil on canvas; 31-5/8 x 23-3/4 in. (80.3 x 60.3 cm). The Nelson-Atkins Museum of Art, Kansas City, Missouri. Purchase: the Kenneth A. and Helen F. Spencer Foundation Acquisition Fund, F72-35. Photo courtesy Nelson-Atkins Media Services / Jamison Miller.

#### CLAUDE MONET

##### *Windmills near Zaandam*



Claude Monet, *Windmills near Zaandam*, 1871. Oil on canvas; 15 3/4 x 28 3/8 in. (40 x 72 cm). The Walters Art Museum, Baltimore, 37.894.

#### CLAUDE MONET

##### *The Parc Monceau*



Claude Monet, *The Parc Monceau*, 1878. Oil on canvas; 28-5/8 x 21-3/8 in. The Metropolitan Museum of Art: The Mr. and Mrs. Henry Irtleson Jr. Purchase Fund, 1959, 59.142. Image courtesy The Metropolitan Museum of Art under CC0 Public Domain Designation.

#### CLAUDE MONET

##### *The Artist's House at Argenteuil*



Claude Monet, *The Artist's House at Argenteuil*, 1873. Oil on canvas; 23-11/16 x 28-7/8 in. (60.2 x 73.3 cm). The Art Institute of Chicago: Mr. and Mrs. Martin A. Ryerson Collection, 1933.1153. Image courtesy The Art Institute of Chicago under CC0 Public Domain Designation.

#### CLAUDE MONET

##### *Landscape in Île Saint-Martin*



Claude Monet, *Landscape in Île Saint-Martin*, 1881. Oil on canvas; 28-3/4 x 23-5/8 in (73 x 59.7 cm). Private collection.

CLAUDE MONET

*Path in the Wheat Fields at Pourville*

---



Claude Monet, *Path in the Wheat Fields at Pourville*, 1882. Oil on canvas; 23 x 30-1/2 in (58.4 x 77.5 cm). Frederic C. Hamilton Collection, bequeathed to the Denver Art Museum, 2016.365.

CLAUDE MONET

*The Strada Romana at Bordighera*

---



Claude Monet, *The Strada Romana at Bordighera*, 1884. Oil on canvas; 26 x 32-1/8 in (66 x 81.5 cm). Private collection.

CLAUDE MONET

*House of the Customs Officer, Varengeville*

---



Claude Monet, *House of the Customs Officer, Varengeville*, 1882. Oil on canvas; 24 x 29 1/2 in. (61 x 74.9 cm). Harvard Art Museums/Fogg Museum; Bequest of Annie Swan Coburn, 1934.27. Photo: Imaging Department © President and Fellows of Harvard College.

CLAUDE MONET

*Under the Poplars*

---



Claude Monet, *Under the Poplars*, 1887. Oil on canvas; 28-3/4 x 36-1/4 in (73 x 92 cm). Private collection.

CLAUDE MONET

*Fishing Boats*

---



Claude Monet, *Fishing Boats*, 1883. Oil on canvas; 25-3/4 x 36-1/2 in (65.4 x 92.7 cm). Frederic C. Hamilton Collection, bequeathed to the Denver Art Museum, 37.2017.

CLAUDE MONET

*The Canoe on the Epte*

---



Claude Monet, *The Canoe on the Epte*, about 1890. Oil on canvas; 52-1/2 x 57-1/2 in (133.5 x 146 cm). Collection Museu de Arte de São Paulo Assis Chateaubriand; Purchase, 1953. Inv. MASP.00092. Photo by Eduardo Ortega.

CLAUDE MONET  
*Grainstacks, Snow Effect*

---



Claude Monet, *Grainstacks, Snow Effect*, 1891. Oil on canvas, 23 x 39 in. (60 x 100 cm). Collection of Shelburne Museum: Gift of Electra Havemeyer Webb Fund, Inc., 1972-69.1.

CLAUDE MONET  
*The Doge's Palace*

---



Claude Monet, *The Doge's Palace*, 1908. Oil on canvas, 32 x 39 in. (81.3 x 99.1 cm). Brooklyn Museum: Gift of A. Augustus Healy, 20.634.

CLAUDE MONET  
*Waterlilies and Japanese Bridge*

---



Claude Monet, *Waterlilies and Japanese Bridge*, 1899. Oil on canvas; 35-5/8 x 35-5/16 in (90.5 x 89.7 cm). Princeton University Art Museum: From the Collection of William Church Osborn, Class of 1883, trustee of Princeton University (1914-1951), president of the Metropolitan Museum of Art (1941-1947); given by his family, 1972-15. Photo Credit: Princeton University Art Museum/Art Resource, NY.

CLAUDE MONET  
*The Water-Lily Pond*

---



Claude Monet, *The Water-Lily Pond*, about 1918. Oil on canvas; 51-5/8 x 77-1/2 in (131 x 197 cm). Private collection.

CLAUDE MONET  
*The House Seen Through the Roses*

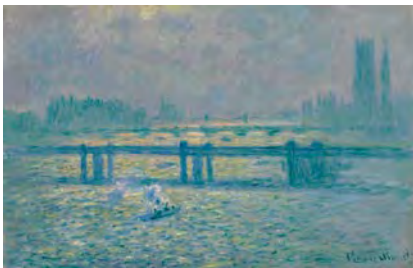
---



Claude Monet, *The House Seen Through the Roses*, 1925-26. Oil on canvas; 26 x 32-1/4 in (66 x 82 cm). Collection Stedelijk Museum, Amsterdam.

CLAUDE MONET  
*Charing Cross Bridge, Reflections on the Thames*

---



Claude Monet, *Charing Cross Bridge, Reflections on the Thames*, 1899-1904. Oil on canvas; 25 5/8 x 39 1/2 in. (65 x 100 cm). The Baltimore Museum of Art: The Helen and Abram Eisenberg Collection, BMA 1945.94. Photography by Mitro Hood.

CLAUDE MONET AT GIVERNY

---



Claude Claude Monet at Giverny, 1908. Bibliotheque des Arts Decoratifs, Paris, France / Archives Charmet / Bridgeman Images.

CLAUDE MONET IN HIS STUDIO

---



Claude Monet in his studio, 1920. Private collection/Roger-Viollet, Paris/Bridgeman Images.