

A photograph of the Denver Art Museum building, featuring a modern design with a curved glass facade in the foreground and a brick upper section with vertical slits. The sky is clear blue.

DENVER
art
MUSEUM

| Event Rental



DENVER
art
MUSEUM

The Denver Art Museum offers inspired spaces, sparkling amenities, and the perfect location for your next event.

Our stunning event spaces are ideal for hosting sumptuous galas, corporate receptions, holiday parties, weddings, intimate dinners, and every special event in-between.

INTIMATE GROUPS OF 10 UP TO 10,000 GUESTS

11 INDOOR SPACES AND 5 OUTDOOR SPACES

ACCESS TO THE MUSEUM'S COLLECTIONS AND SPECIAL EXHIBITIONS

IN-HOUSE CATERING AND AUDIOVISUAL

By booking your event at the DAM, you are supporting our mission: to enrich the lives of present and future generations through the acquisition, presentation, and preservation of works of art.

Table of Contents

LANNY AND SHARON MARTIN BUILDING	4
Kemper Courtyard and Amphitheater	6
The Prow Garden	8
The Garden Room	10
Sturm Grand Pavilion	12
South Sturm Pavilion	14
The Seventh Floor Summit Room with Sie & Johnson Terraces	16
Galleries – All Levels	18
The Ponti Restaurant with Terraces	20
The Ponti Private Dining Room	22
FREDERIC C. HAMILTON BUILDING	24
Sharp Auditorium and Lobby	26
Congdon Boardroom	28
Hamilton Lower Level Package	30
El Pomar Atrium	32
Level Two Atrium	34
Hamilton Atria Package	36
DENVER ART MUSEUM CAMPUS	38
CONTACT US	40

Lanny and Sharon Martin Building

DENVER ART MUSEUM

EVENT RENTAL

DENVER
art
MUSEUM

About the building

In 1971, the museum opened what is now known as the Martin Building, designed by Italian master of modern design Gio Ponti. This architectural marvel recently underwent a multi-year renovation and now features all new indoor and outdoor event spaces, a restaurant with private dining, and seven floors of collections galleries.

BUILDING CAPACITY : 6,500

RECEPTION CAPACITY : 2,000

TOTAL SQUARE FOOTAGE : 210,000

RENTAL FEE

HALF DAY (4 hrs):

\$18,000

This includes a 6 hour space use window in the morning prior to 4pm, OR an evening event with load in no sooner than 4pm. Rate includes 4 hours of event time with one hour of vendor and client set up and one hour of load out. Furniture and AV will be preset.

FULL DAY (Wed. only):

\$25,000

12 Hour space use that includes an hour of set up, 10 hours of event time, and one hour of break down.
This rate is only available on Wednesdays.

Rental Prices include a limited number of tables, chairs, china, and flatware at no additional charge, subject to availability. Rentals during museum hours include complimentary GA entry to the DAM. Not for profit discount offered at 10% of the space rental.





ABOUT THE SPACE

Reception capacity : 200
Seated capacity : 150

LANNY AND SHARON MARTIN BUILDING

Kemper Courtyard and Amphitheater

A beautiful, multi-tiered outdoor space with landscaped trees and lighted paths. Featuring Deborah Butterfield sculptures, an elevated amphitheater, and views of the Martin Building. Kemper Courtyard and Amphitheatre comes with the delightfully designed Wonderscape as an indoor adjacency.

RENTAL FEE

HALF DAY:

\$4,000

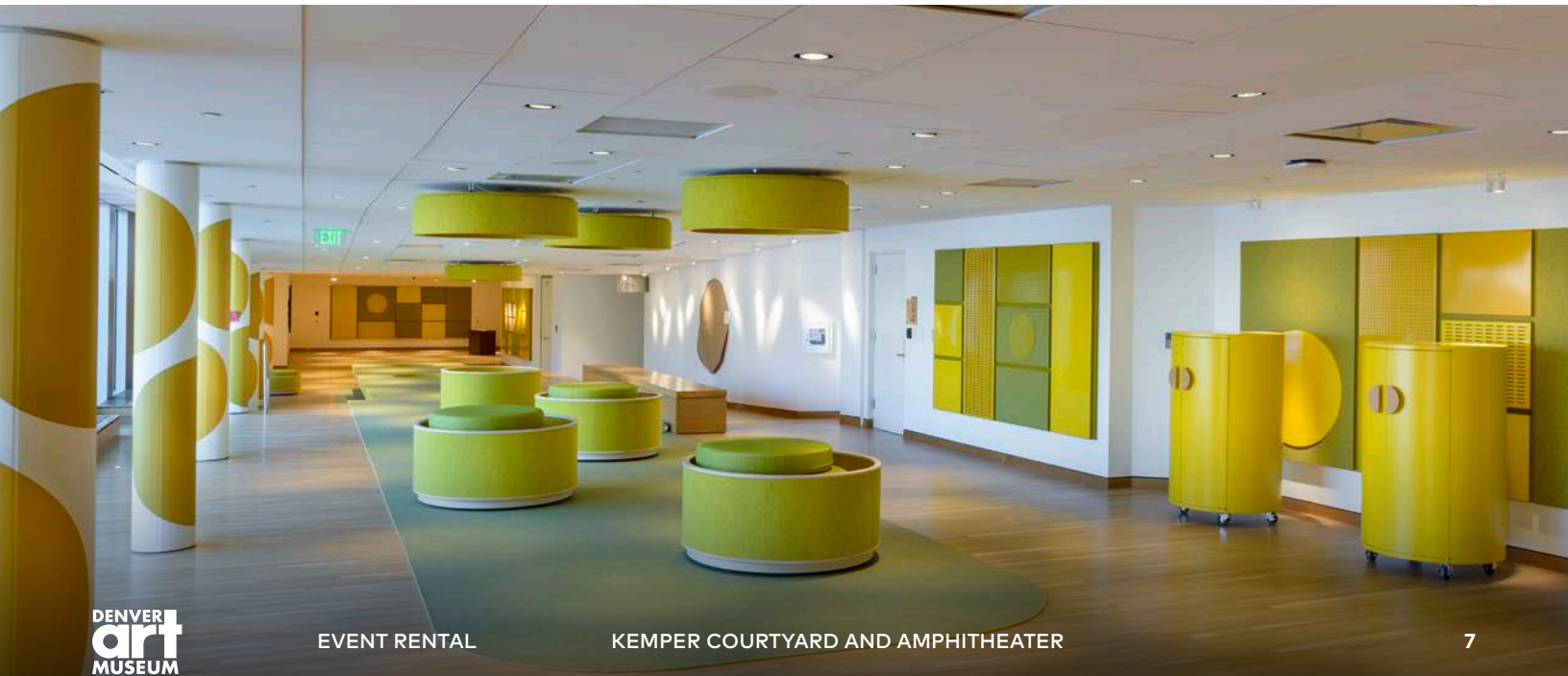
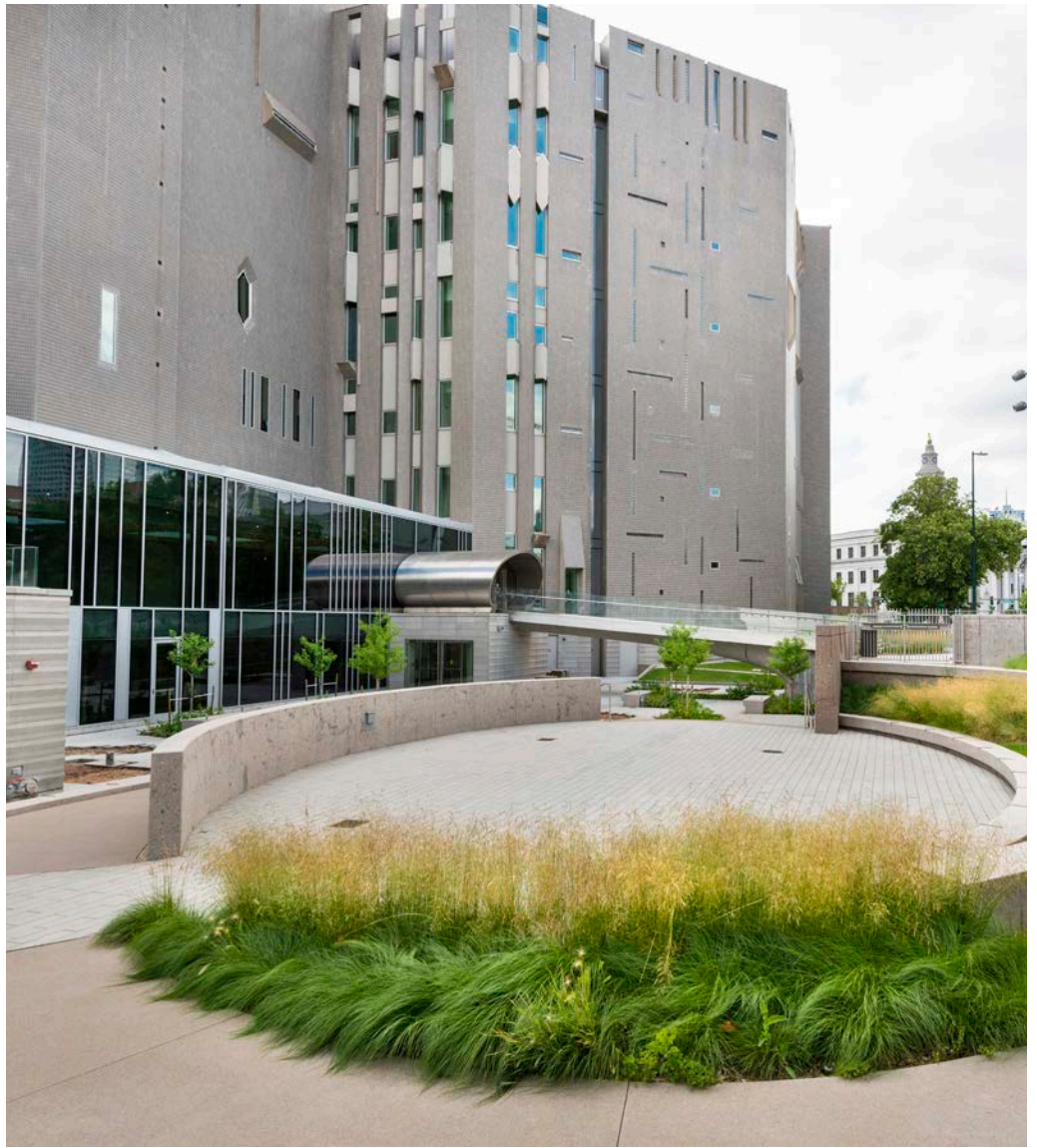
This includes a 6 hour space use window in the morning prior to 4pm, OR an evening event with load in no sooner than 4pm.
Morning availability only available on Wednesdays.
Furniture and AV will be preset.

FULL DAY (Wed., Sat., Sun. only):

\$7,200

12 Hour space use that includes an hour of set up, 10 hours of event time, and one hour of break down. This rate is only available on select days of the week.

Rental Prices include a limited number of tables, chairs, china, and flatware at no additional charge, subject to availability. Rentals during museum hours include complimentary GA entry to the DAM. Not for profit discount offered at 10% of the space rental.





ABOUT THE SPACE

Reception capacity : 200
Square footage : 2993

LANNY AND SHARON MARTIN BUILDING

The Prow Garden

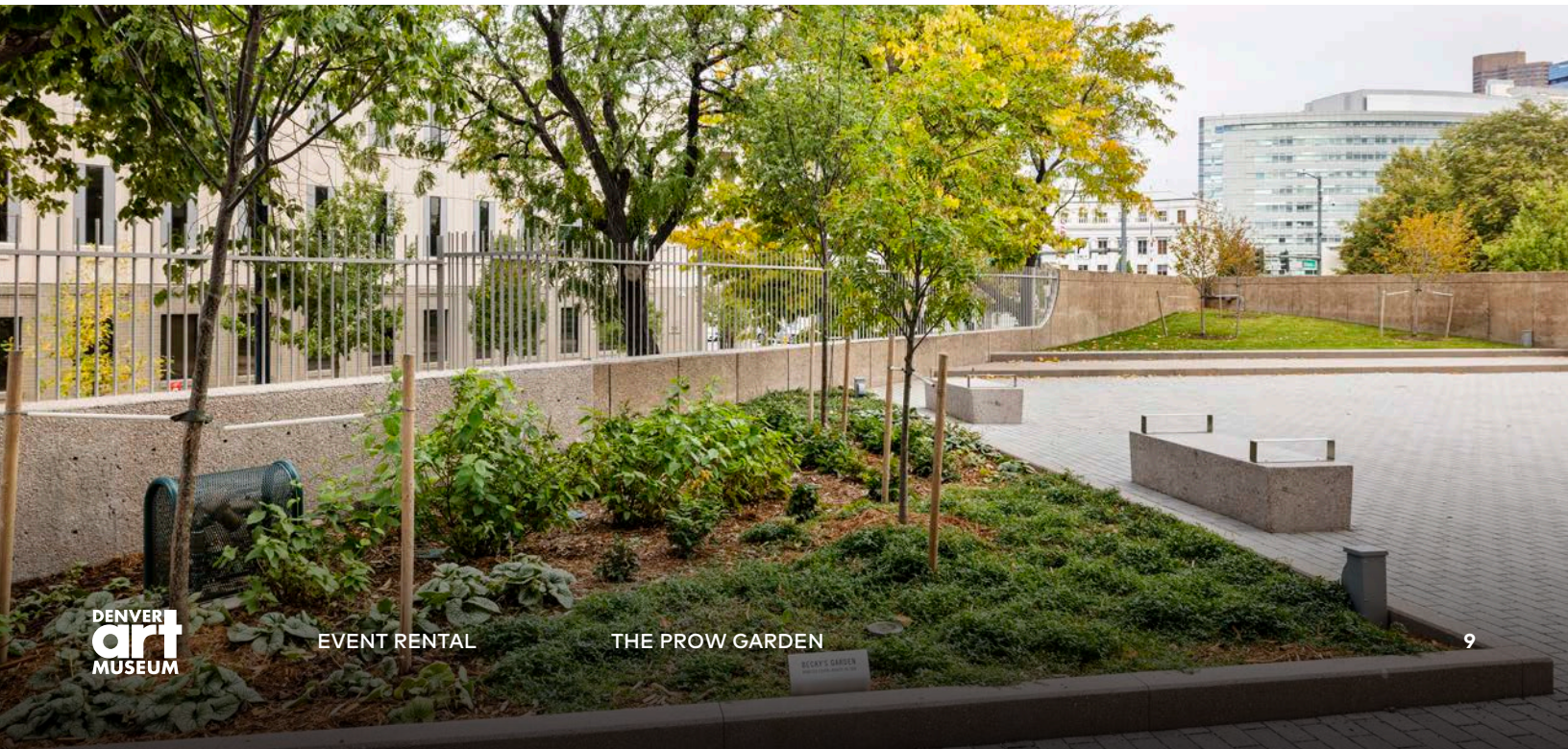
A triangular, paved garden with views of the Denver skyline and Civic Center Park. Seamless event flow with the Garden Room and the Kemper Courtyard and Amphitheatre. Perfect for wedding ceremonies, tributes, cocktail hours, outdoor receptions, and intimate gatherings.

RENTAL FEE

HALF DAY:	\$3,500
This includes a 6 hour space use window in the morning prior to 4pm, OR an evening event with load in no sooner than 4pm. Rate includes 4 hours of event time with one hour of vendor and client set up and one hour of load out. Furniture and AV will be preset.	

FULL DAY (Wed., Sat., Sun. only):	\$6,000
12 Hour space use that includes an hour of set up, 10 hours of event time, and one hour of break down. This rate is only available on Wednesdays, Saturdays, and Sundays.	

Rental Prices include a limited number of tables, chairs, china, and flatware at no additional charge, subject to availability. Rentals during museum hours include complimentary GA entry to the DAM. Not for profit discount offered at 10% of the space rental.





ABOUT THE SPACE

Reception capacity : 80
 Seated capacity : 50
 Square footage : 1053

LANNY AND SHARON MARTIN BUILDING

The Garden Room

A beautiful event space perfect for intimate receptions, staff retreats, rehearsal dinners, or as a staging suite for weddings. The Garden Room features state-of-the art AV, pathways to both the Prow Garden and Sensory Garden, and an exquisite piece by Phillip Taaffe. Available for all-day rental.

RENTAL FEE

HALF DAY Daytime Event: **\$825**
 This includes a 6 hour space use window during the day ending no later than 2pm.

HALF DAY Evening Event: **\$1,500**
 Evening event with load in no sooner than 4pm. Rate includes 4 hours of event time with one hour of vendor and client set up and one hour of load out. Furniture and AV will be preset.

FULL DAY: **\$2,500**
 12 Hour space use that includes an hour of set up, 10 hours of event time, and one hour of break down.

Rental Prices include a limited number of tables, chairs, china, and flatware at no additional charge, subject to availability. Rentals during museum hours include complimentary GA entry to the DAM. Not for profit discount offered at 10% of the space rental.



AV PACKAGES

Meeting Package

- HDMI or Clickshare
- TV Screen
- In room PC
- A/V Tech

4 Hours AV Activation: \$750
 (Half Day Rental Only)

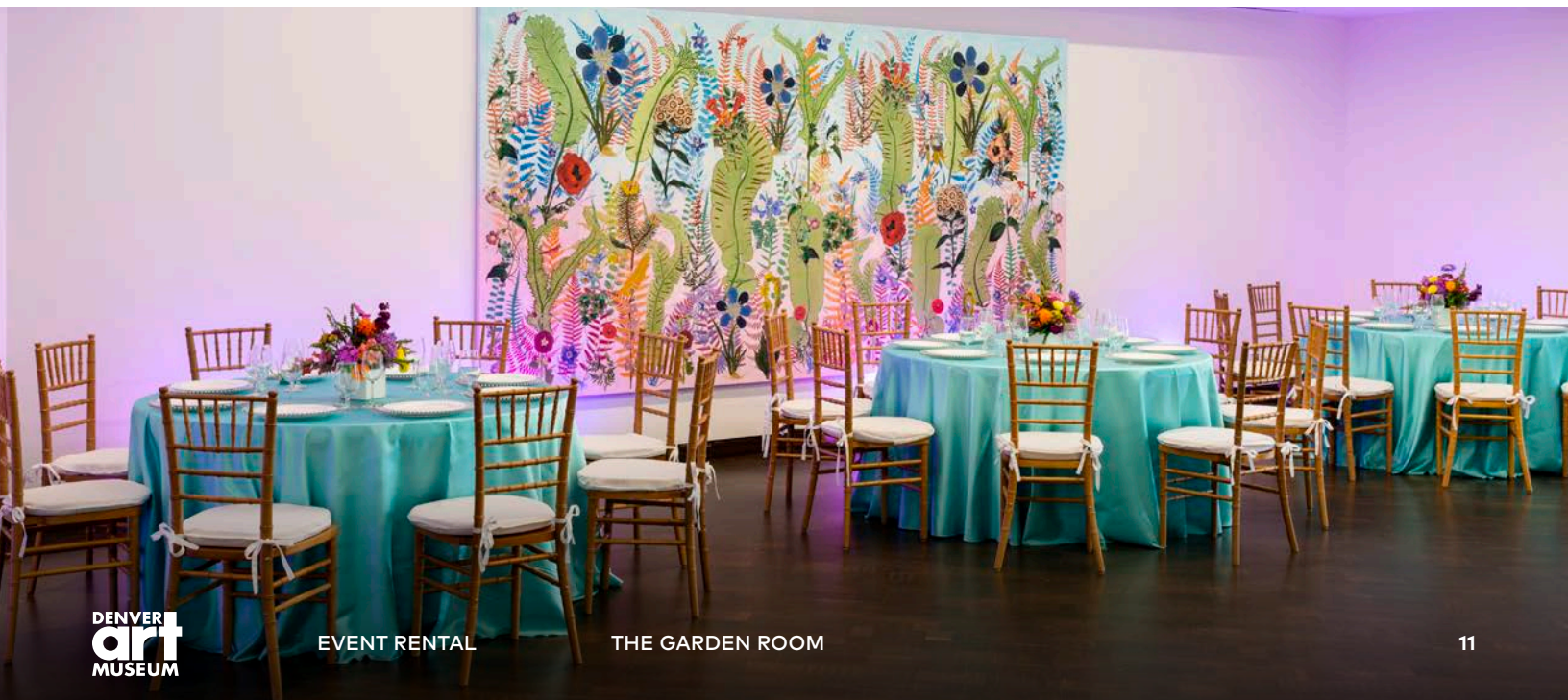
8 Hours AV Activation: \$1,500

Hybrid Package

- Table Microphones
- PTZ camera
- Up to 2 microphones

4 Hours AV Activation: \$1,000
 (Half Day Rental Only)

8 Hours AV Activation: \$2,000





ABOUT THE SPACE

Reception capacity : 900
 Seated capacity : 500
 Square footage : 14,450

LANNY AND SHARON MARTIN BUILDING

Sturm Grand Pavilion

The Sturm Grand Pavilion is our premiere event space on level two of the Sie Welcome Center. Enclosed in a fluted glass façade, this stunning space provides sweeping views of downtown Denver, state-of-the-art AV, and complimentary access to all galleries on the second level of the Martin Building. For your gala, wedding, holiday party, awards ceremony, or large reception.

RENTAL FEE

HALF DAY Daytime Event: This includes a 6 hour space use window during the day ending no later than 2pm. Includes one hour set up, 4 hour event time, and 1 hour load out. AV and Furniture will be preset.	\$6,500
HALF DAY Evening Event: Evening event with load in no sooner than 4pm. Rate includes 4 hours of event time with one hour of vendor and client set up and one hour of load out. Furniture and AV will be preset.	\$9,000
FULL DAY: 12 hour space use that includes no less than 1 hour of set up time, and 1 hour of load out.	\$11,500

*Rental Fee for Grand Sturm includes access to the galleries on view in the Martin Building Second Floor.

Rental Prices include a limited number of tables, chairs, china, and flatware at no additional charge, subject to availability. Rentals during museum hours include complimentary GA entry to the DAM. Not for profit discount offered at 10% of the space rental.

AV PACKAGES

Audio Package:	In-house Stage 16'W x 12'D x 2'H Performance Lighting and Stage Wash <i>(Full Color LED Lights & Moving Head Fixtures + Lighting Console)</i> Lectern with Gooseneck Microphone Up to 8 Channels of Wireless Mics	\$1,500
Video Package: (includes Audio Package)	2 Projectors + Screens <i>(Panasonic 20K Lumen Projectors + 18'W x 10'H Dropdown Screens)</i> Portable AV Rack with Video Switcher <i>(Black Magic 4K SDI Switcher + Adapter as Required)</i> Computers for Content Playback <i>(Includes 2 computers)</i> Clicker with Laser Pointer	\$3,500
Camera Package: (includes both Audio and Video Packages)	(2) Camcorders for recording and IMAG Video Recording <i>(Digital HD Recording of Program Video Feed)</i> Optional Livestream Package <i>(Computer, Encoder, DAM Hosted Stream)</i>	\$4,500

All packages priced for 4 hours of AV activation and 1 hour of tech check. Additional cost per hour is \$425.





ABOUT THE SPACE

Reception capacity : 250
 Theatre style capacity : 300
 Seated capacity : 200
 Square footage : 4,900

LANNY AND SHARON MARTIN BUILDING

South Sturm Pavilion

An airwall partition separates the South Sturm Pavilion into a private event space perfect for luncheons, seated dinners, meetings, and receptions. Offers a large circular space featuring floor-to-ceiling fluted glass windows, state-of-the-art AV, and more. Available for rental before, during, and after museum hours.

RENTAL FEE

HALF DAY Daytime Event: **\$4,500**

This includes a 6 hour space use window during the day ending no later than 2pm. Includes one hour set up, 4 hour event time, and 1 hour load out. AV and Furniture will be preset.

HALF DAY Evening Event: **\$7,000**

Evening event with load in no sooner than 4pm. Rate includes 4 hours of event time with one hour of vendor and client set up and one hour of load out. Furniture and AV will be preset.

FULL DAY: **\$9,000**

12 hour space use that includes no less than 1 hour of set up time, and 1 hour of load out.

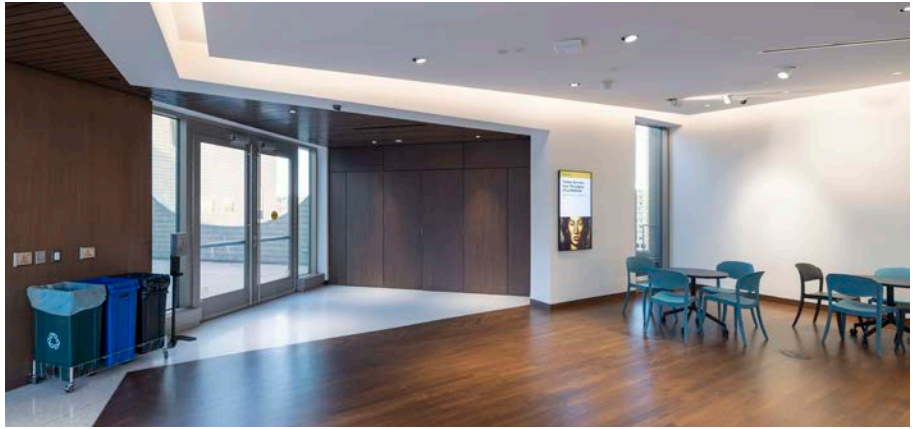
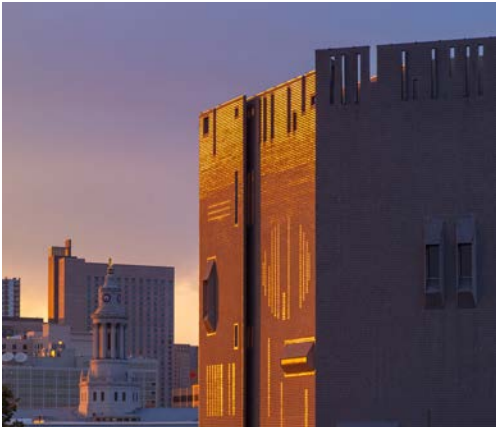
Rental Prices include a limited number of tables, chairs, china, and flatware at no additional charge, subject to availability. Rentals during museum hours include complimentary GA entry to the DAM. Not for profit discount offered at 10% of the space rental.

AV PACKAGES

Audio Package:	In-house Stage 16'W x 12'D x 2'H Performance Lighting and Stage Wash (Full Color LED Lights & Moving Head Fixtures + Lighting Console) Lectern with Gooseneck Microphone Up to 8 Channels of Wireless Mics	\$1,500
Video Package: (includes Audio Package)	2 Projectors + Screens (Panasonic 20K Lumen Projectors + 18'W x 10'H Dropdown Screens) Portable AV Rack with Video Switcher (Black Magic 4K SDI Switcher + Adapter as Required) Computers for Content Playback (Includes 2 computers) Clicker with Laser Pointer	\$3,500
Camera Package: (includes both Audio and Video Packages)	(2) Camcorders for recording and IMAG Video Recording (Digital HD Recording of Program Video Feed) Optional Livestream Package (Computer, Encoder, DAM Hosted Stream)	\$4,500

All packages priced for 4 hours of AV activation and 1 hour of tech check. Additional cost per hour is \$425.





ABOUT THE SPACE

Summit Room capacity : 35
Johnson Terrace capacity : 60
Sie Terrace capacity : 35
Square footage : 3,464

LANNY AND SHARON MARTIN BUILDING

The 7th Floor Summit Room

(WITH SIE AND JOHNSON TERRACES)

A gallery and indoor event space that offer sweeping views of the Front Range from North to South, plus access to two adjoining rooftop terraces. Event rental includes the Summit Room, the Sie and Johnson Terraces, plus access to the north galleries of the Western American Art collection.

RENTAL FEE

HALF DAY Daytime Event: \$1,500

This includes a 6 hour space use window during the day ending no later than 2pm. Includes one hour set up, 4 hour event time, and 1 hour load out. AV and Furniture will be preset.

HALF DAY Evening Event: \$2,500

Evening event with load in no sooner than 4pm. Rate includes 4 hours of event time with one hour of vendor and client set up and one hour of load out. Furniture and AV will be preset.

FULL DAY: \$4,500

12 hour space use that includes no less than 1 hour of set up time, and 1 hour of load out.

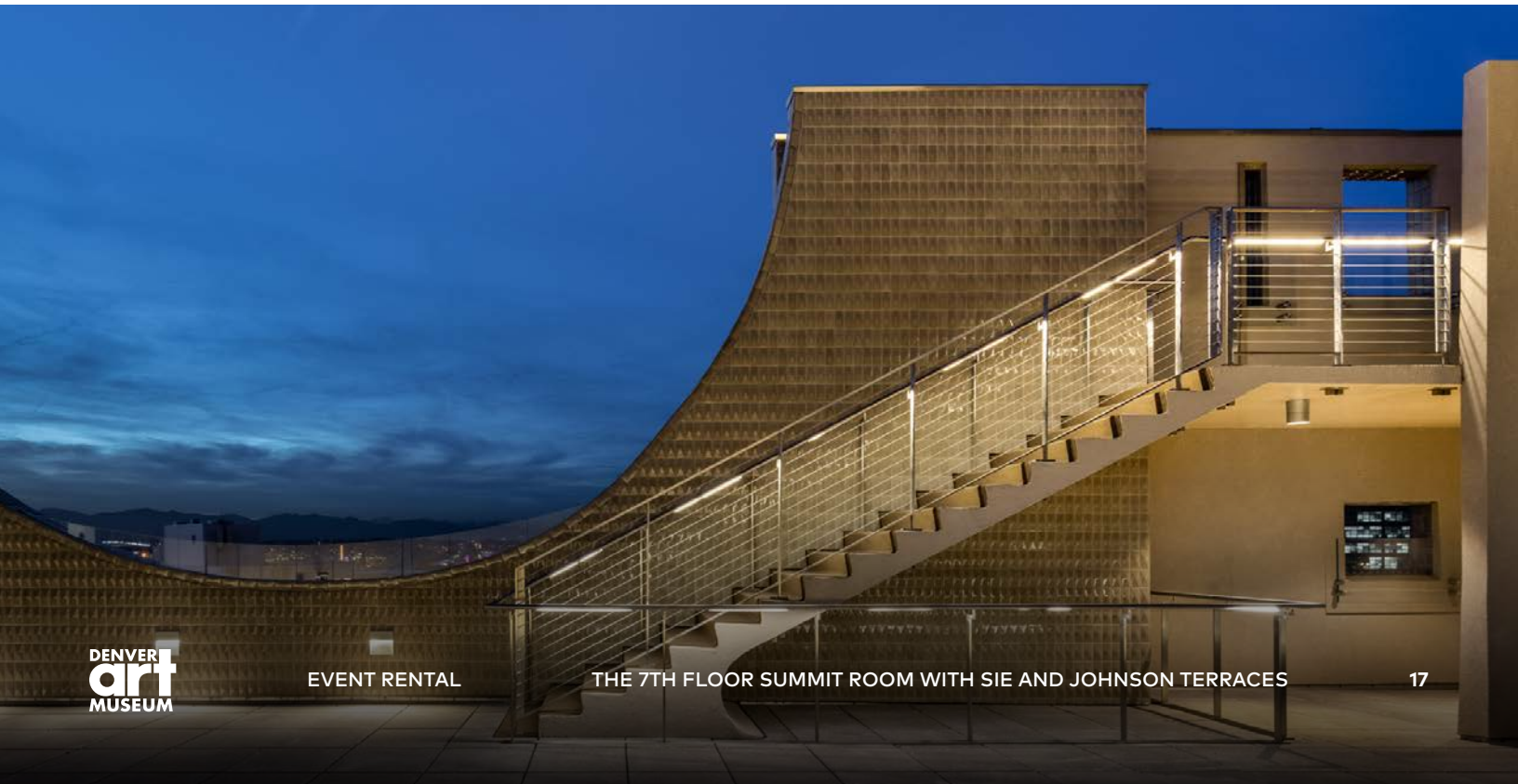
Rental Prices include a limited number of tables, chairs, china, and flatware at no additional charge, subject to availability. Rentals during museum hours include complimentary GA entry to the DAM. Not for profit discount offered at 10% of the space rental.



AV PACKAGE

Built in audio for background music
(1) wireless microphone
65" TV for presentation
Podium
A/V Tech

4 Hours AV Activation: \$800
8 Hours AV Activation: \$1,600





ABOUT THE SPACE

No food or beverages are permitted in any DAM gallery.

Price will vary for special exhibitions.

**LANNY AND SHARON MARTIN BUILDING
& FREDERIC C. HAMILTON BUILDING**

Galleries All Levels

The Martin Building features seven floors of permanent collection galleries and houses a unique and expansive collection on every floor.

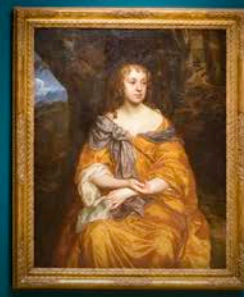
The Hamilton Building features both permanent gallery spaces and special exhibition gallery spaces. Current exhibitions include our *19th Century in European and American Art*.

Galleries may be rented for private self-led access, private tours, and more.

RENTAL FEE

EVENING Rental (4 hrs activation): \$800
 For use after museum hours (5pm and later) to add on for access with another event space or for a private tour.

DAYTIME Private Viewing Rental (8 hrs activation): \$1,400
 For use on a Wednesday only for private viewing. A popular add on feature to a daytime event rental.





ABOUT THE SPACE

Seated capacity : 123
Square footage : 1382

LANNY AND SHARON MARTIN BUILDING

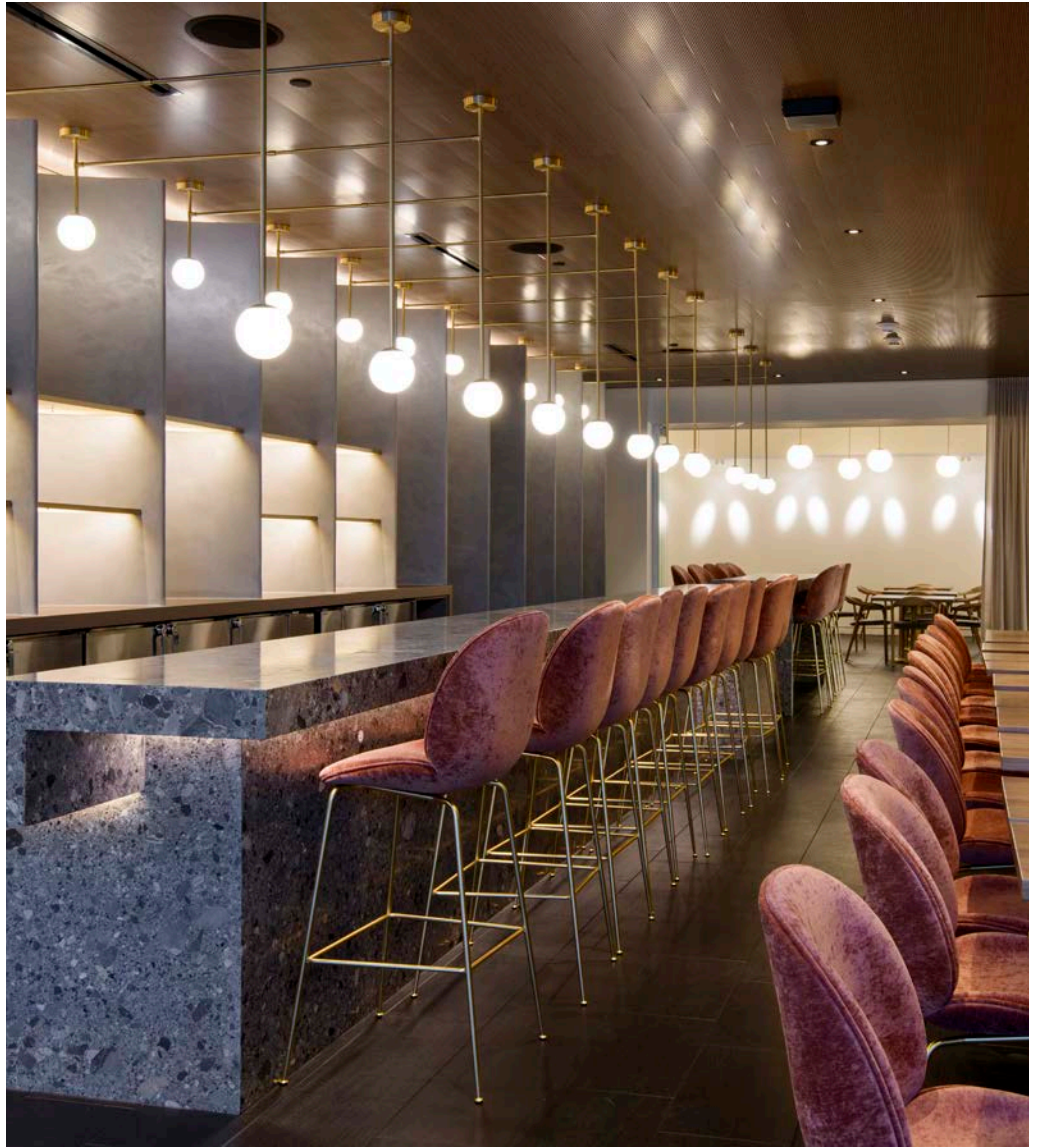
The Ponti Restaurant

(WITH TERRACE)

The Ponti Restaurant combines art and elegant dining with a locally-sourced and inspired menu designed by James Beard Award winner and celebrated Denver chef Jennifer Jasinski.

RENTAL FEE

EVENING Restaurant Buyout:	\$1,200
FULL DAY Restaurant Buyout (Wed. only):	F&B Min + \$1,000





ABOUT THE SPACE

Seated capacity : 32
Square footage : 638

LANNY AND SHARON MARTIN BUILDING

The Ponti Private Dining Room

The Ponti Private Dining Room is a sophisticated dining space equipped with state-of-the-art AV and elegant aesthetics. Perfect for intimate gatherings, corporate meetings, rehearsal dinners, and more.

RENTAL FEE

EVENING Private Dining Room:	F&B Min + \$600
DURING Museum Restaurant Hours:	F&B Min + \$1,000



AV PACKAGE

Built in audio for background music
Podium
98" TV for presentation
(1) Microphone (if needed)
A/V Tech

4 Hours AV Activation: \$600
8 Hours AV Activation: \$1,200



Frederic C. Hamilton Building

DENVER ART MUSEUM

EVENT RENTAL

DENVER
art
MUSEUM

About the building

The Hamilton Building's iconic Daniel Libeskind-designed architecture is adaptable to events of all formats and scale. It offers easy access to extraordinary art experiences, such as past exhibitions like *Star Wars™ and the Power of Costume*, *Claude Monet: The Truth of Nature*, and *Dior: From Paris to the World*, to name a few.

BUILDING CAPACITY: 4000

RECEPTION CAPACITY: 800

SQUARE FOOTAGE: 146,000

RENTAL FEE

HALF DAY:

\$12,000

This includes a 6 hour space use window in the morning prior to 4pm, OR an evening event with load in no sooner than 4pm. Rate includes 4 hours of event time with one hour of vendor and client set up and one hour of load out. Furniture and AV will be preset.

Events prior to 4pm can be held on Wednesday only.

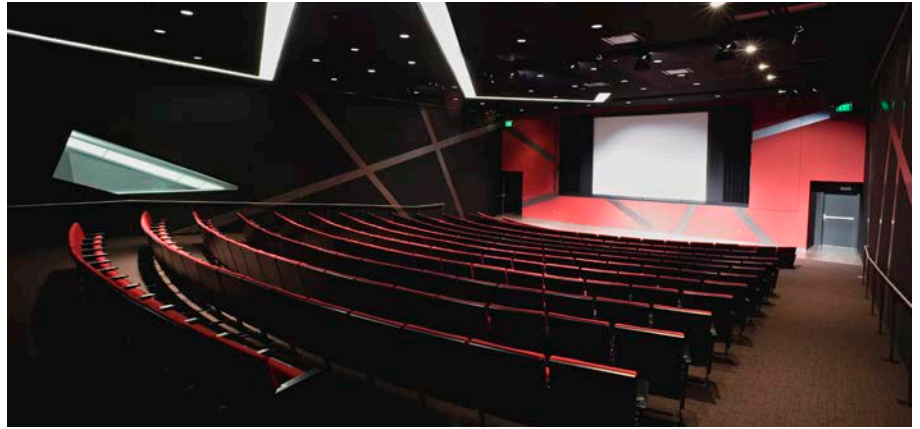
FULL DAY (Wed. only):

\$17,000

12 Hour space use that includes an hour of set up, 10 hours of event time, and one hour of break down. This rate is only available on Wednesdays.

Rental Prices include a limited number of tables, chairs, china, and flatware at no additional charge, subject to availability. Not for profit discount offered at 10% of the space rental.





ABOUT THE SPACE

Auditorium capacity : 266
 Lobby square footage : 950

FREDERIC C. HAMILTON BUILDING

Sharp Auditorium and Lobby

The Lewis I. Sharp Auditorium provides a dynamic touch for corporate meetings, symposiums, keynote addresses, lectures, or conferences. Includes use of the Sharp Lobby for registration and reception.

BELOW PRICING INCLUDES AV ACTIVATION

RENTAL FEE

HALF DAY Daytime Event:	\$2,000
This includes a 6 hour space use window during the day ending no later than 2pm. Includes one hour set up, 4 hour event time, and 1 hour load out. AV and Furniture will be preset.	
HALF DAY Evening Event:	\$2,500
Evening event with load in no sooner than 4pm. Rate includes 4 hours of event time with one hour of vendor and client set up and one hour of load out. Furniture and AV will be preset.	
FULL DAY:	\$4,500
12 hour space use that includes no less than 1 hour of set up time, and 1 hour of load out.	

Rental Prices include a limited number of tables, chairs, china, and flatware at no additional charge, subject to availability. Rentals during museum hours include complimentary GA entry to the DAM. Not for profit discount offered at 10% of the space rental.



AV PACKAGES INCLUDED

Audio & Projector Package

- House & Stage Lighting
- Projector
- Up to 8 wireless microphones
- Laptop and clicker
- A/V Tech

INCLUDED with Space Rental

Recording Package

- Camera
 - Video
 - Livestream
 - Confidence monitor
 - A/V Tech
- (This package includes everything in the Audio + Projector Package)*

ADDITIONAL cost for Recording package

- 4 Hours AV Activation: \$750
- 8 Hours AV Activation: \$1,500





ABOUT THE SPACE

Seated capacity : 50
 Square footage : 1110

FREDERIC C. HAMILTON BUILDING

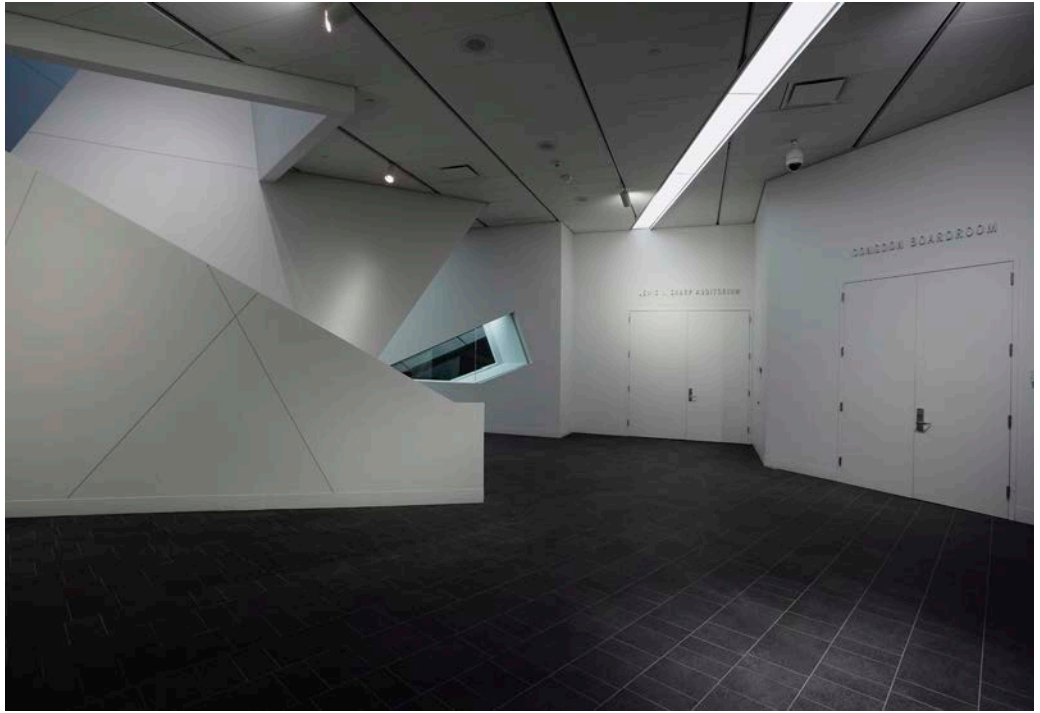
Congdon Boardroom

The Congdon Boardroom provides an elegant setting for meetings, events, and corporate retreats. The room is beautifully adorned with bold, modern textiles by Alexander Calder.

RENTAL FEE

HALF DAY Daytime Event:	\$500
This includes a 6 hour space use window during the day ending no later than 2pm. Includes one hour set up, 4 hour event time, and 1 hour load out. AV and Furniture will be preset.	
HALF DAY Evening Event:	\$1,000
Evening event with load in no sooner than 4pm. Rate includes 4 hours of event time with one hour of vendor and client set up and one hour of load out. Furniture and AV will be preset.	
FULL DAY:	\$1,500
12 hour space use that includes no less than 1 hour of set up time, and 1 hour of load out.	

Rental Prices include a limited number of tables, chairs, china, and flatware at no additional charge, subject to availability. Rentals during museum hours include complimentary GA entry to the DAM. Not for profit discount offered at 10% of the space rental.



AV PACKAGES

Meeting Package

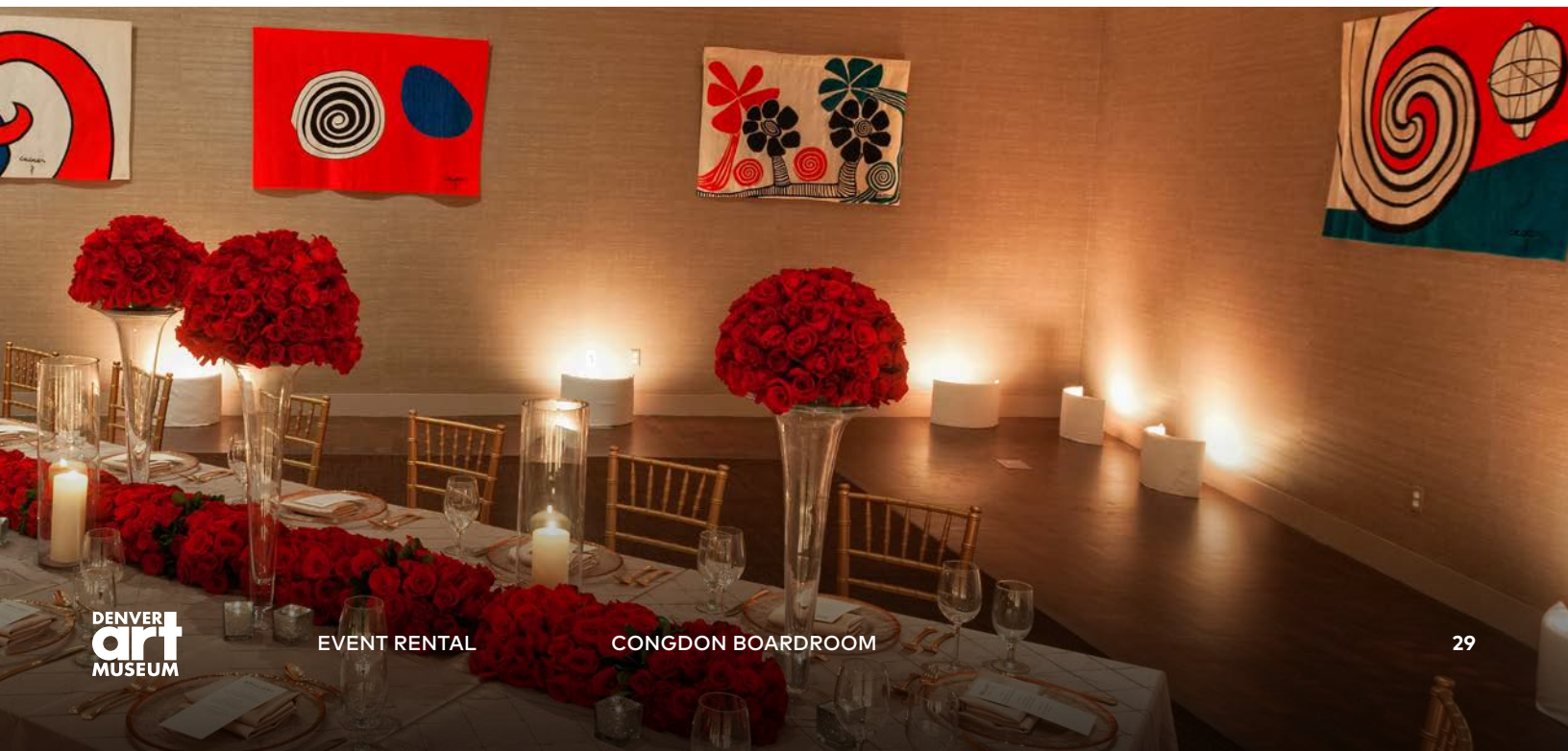
HDMI or Clickshare
 Projector
 Background music/audio
 In room PC
 A/V Tech
 Staff

4 Hours AV Activation: \$750
 8 Hours AV Activation: \$1,500

Hybrid Package 2

Table Microphones
 PTZ camera
 Up to 2 microphones
 A/V Tech
 Staff

4 Hours AV Activation: \$1,000
 8 Hours AV Activation: \$2,000





ABOUT THE SPACE

Auditorium capacity: 266
 Congdon Boardroom capacity: 50
 Square footage: 2050

FREDERIC C. HAMILTON BUILDING

Hamilton Lower Level Package

SHARP AUDITORIUM | SHARP LOBBY |
 CONGDON BOARDROOM

Enjoy private access to the entire lower level of the Hamilton Building. Perfect for conferences, lectures, and programs in need of break-out, VIP, or green room areas plus private reception space.

RENTAL FEE

HALF DAY Daytime Event: **\$2,800**

This includes a 6 hour space use window during the day ending no later than 2pm. Includes one hour set up, 4 hour event time, and 1 hour load out. AV and Furniture will be preset.

HALF DAY Evening Event: **\$3,500**

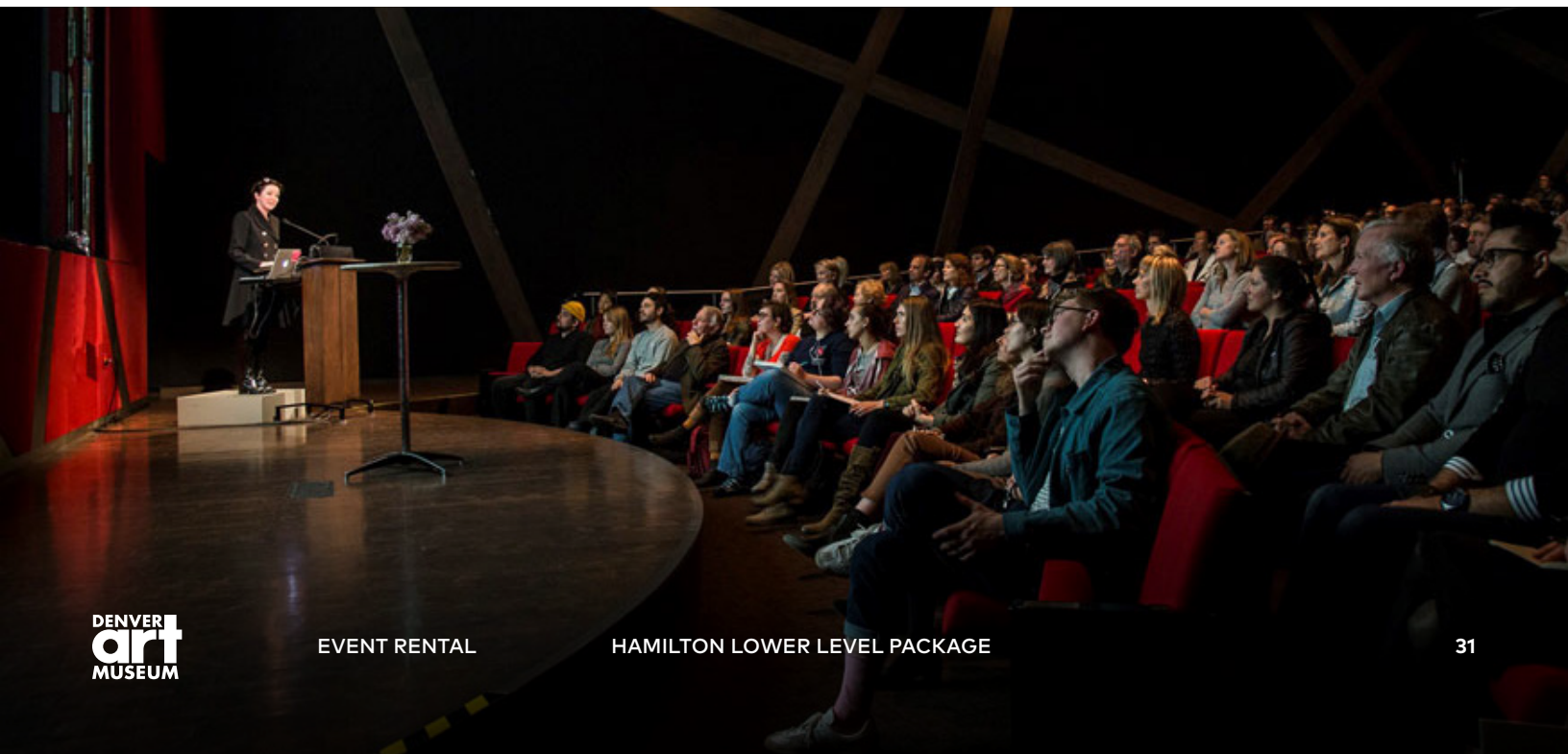
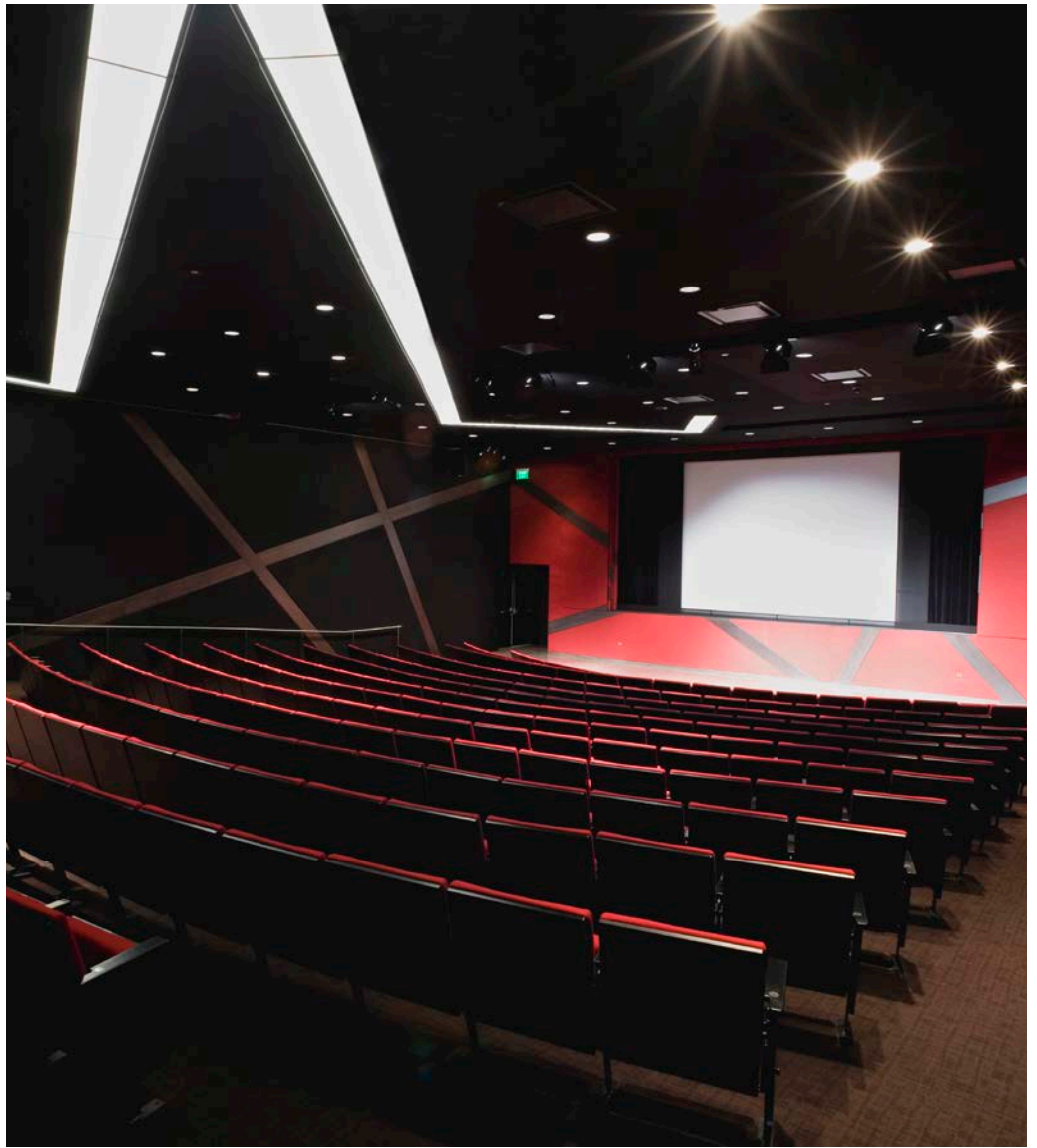
Evening event with load in no sooner than 4pm. Rate includes 4 hours of event time with one hour of vendor and client set up and one hour of load out. Furniture and AV will be preset.

FULL DAY: **\$6,000**

12 hour space use that includes no less than 1 hour of set up time, and 1 hour of load out.

AV INCLUDED IN RATES ABOVE FOR SHARP AUDITORIUM

Rental Prices include a limited number of tables, chairs, china, and flatware at no additional charge, subject to availability. Rentals during museum hours include complimentary GA entry to the DAM. Not for profit discount offered at 10% of the space rental.





ABOUT THE SPACE

Reception capacity: 350
 Seated capacity: 150
 Square footage: 5,000
 Number of Floors: 1

FREDERIC C. HAMILTON BUILDING

El Pomar Atrium

Sloping walls, black granite floors, a magnificent staircase, and dynamic architectural design. The El Pomar Atrium features stunning event space and convenient access to fresh exhibitions at the DAM.

RENTAL FEE

HALF DAY Evening Event: **\$4,500**

Evening event with load in no sooner than 5pm. Rate includes 4 hours of event time with one hour of vendor and client set up and one hour of load out. Furniture and AV will be preset.

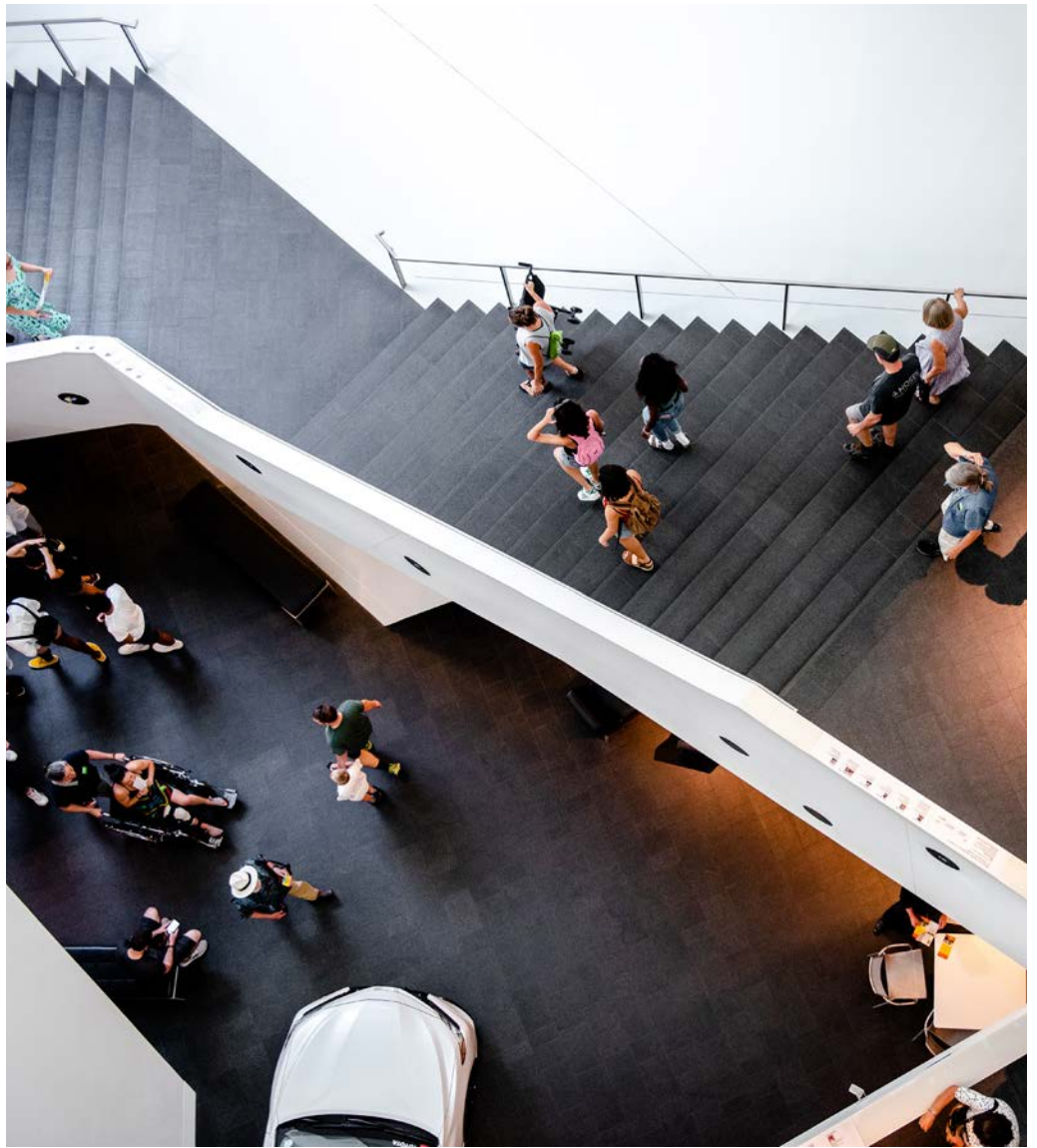
HALF DAY Daytime Event(Wed. only): **\$4,500**

Morning event ending no later than 2pm. Rate includes 4 hours of event time with one hour of vendor and client set up and one hour of load out. Furniture and AV will be preset.

FULL DAY (Wed. only): **\$8,000**

12 hour space use that includes no less than 1 hour of set up time, and 1 hour of load out. Available on Wednesdays Only.

Rental Prices include a limited number of tables, chairs, china, and flatware at no additional charge, subject to availability. Rentals during museum hours include complimentary GA entry to the DAM. Not for profit discount offered at 10% of the space rental.





ABOUT THE SPACE

Reception capacity: 250
Seated capacity: 80
Square footage: 1274
Number of Floors: 1

FREDERIC C. HAMILTON BUILDING

Level Two Atrium

A mid-size event space directly adjacent to the DAM's special exhibition galleries and the *19th Century in European and American Art* painting and sculpture galleries. The Level Two Atrium provides impressive architectural views, event space in-the-round, and close proximity to Sturm Grand Pavilion via the Reiman Bridge.

RENTAL FEE

HALF DAY Evening Event:	\$2,500
Evening event with load in no sooner than 5pm. Rate includes 4 hours of event time with one hour of vendor and client set up and one hour of load out. Furniture and AV will be preset.	

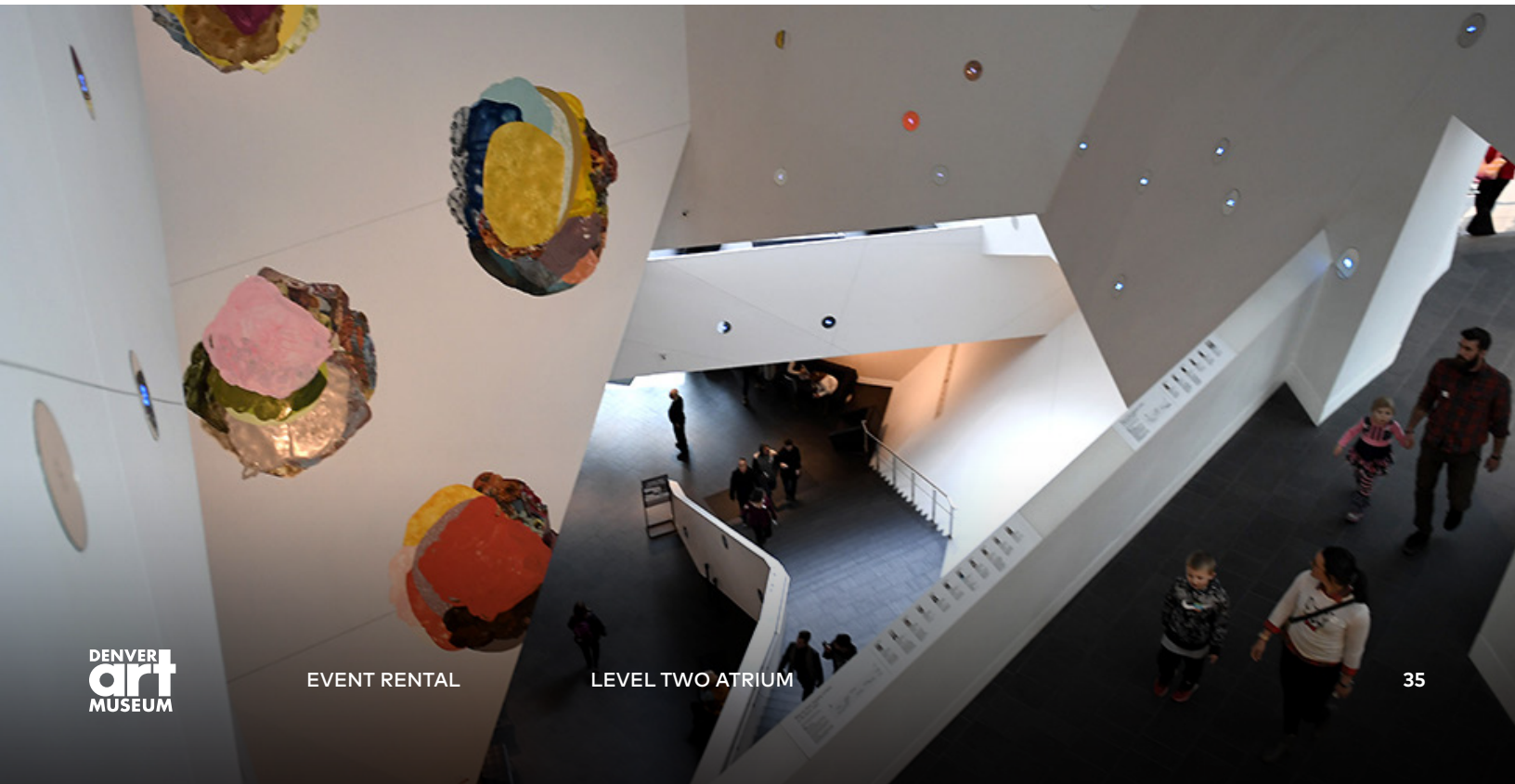
Rental Prices include a limited number of tables, chairs, china, and flatware at no additional charge, subject to availability. Rentals during museum hours include complimentary GA entry to the DAM. Not for profit discount offered at 10% of the space rental.



AV PACKAGE

(2) speakers, wireless microphone,
background music
(10) Uplights
(1) A/V Tech

4 Hours AV Activation: \$800
8 Hours AV Activation: \$1,600





ABOUT THE SPACE

Reception capacity: 500
Seated capacity: 275
Number of Floors: 3

FREDERIC C. HAMILTON BUILDING

Hamilton Atria Package

EL POMAR ATRIUM | LEVEL TWO ATRIUM

For a complete event experience in the Hamilton Building, the EL Pomar and Level Two Atria combine to provide the perfect atmosphere for large parties and unforgettable occasions.

RENTAL FEE

HALF DAY Evening Event: \$6,000

Evening event with load in no sooner than 5pm. Rate includes 4 hours of event time with one hour of vendor and client set up and one hour of load out. Furniture and AV will be preset. Includes one GA gallery adjacent to your event space.

HALF DAY Morning Event (Wed. only): \$6,000

Morning event ending no later than 2pm. Rate includes 4 hours of event time with one hour of vendor and client set up and one hour of load out. Furniture and AV will be preset. **Available on Wednesdays only.**

FULL DAY (Wed. only): \$10,000

12 hour space use that includes no less than 1 hour of set up time, and 1 hour of load out. Available only on Wednesdays. Includes one GA Gallery adjacent to your event space.

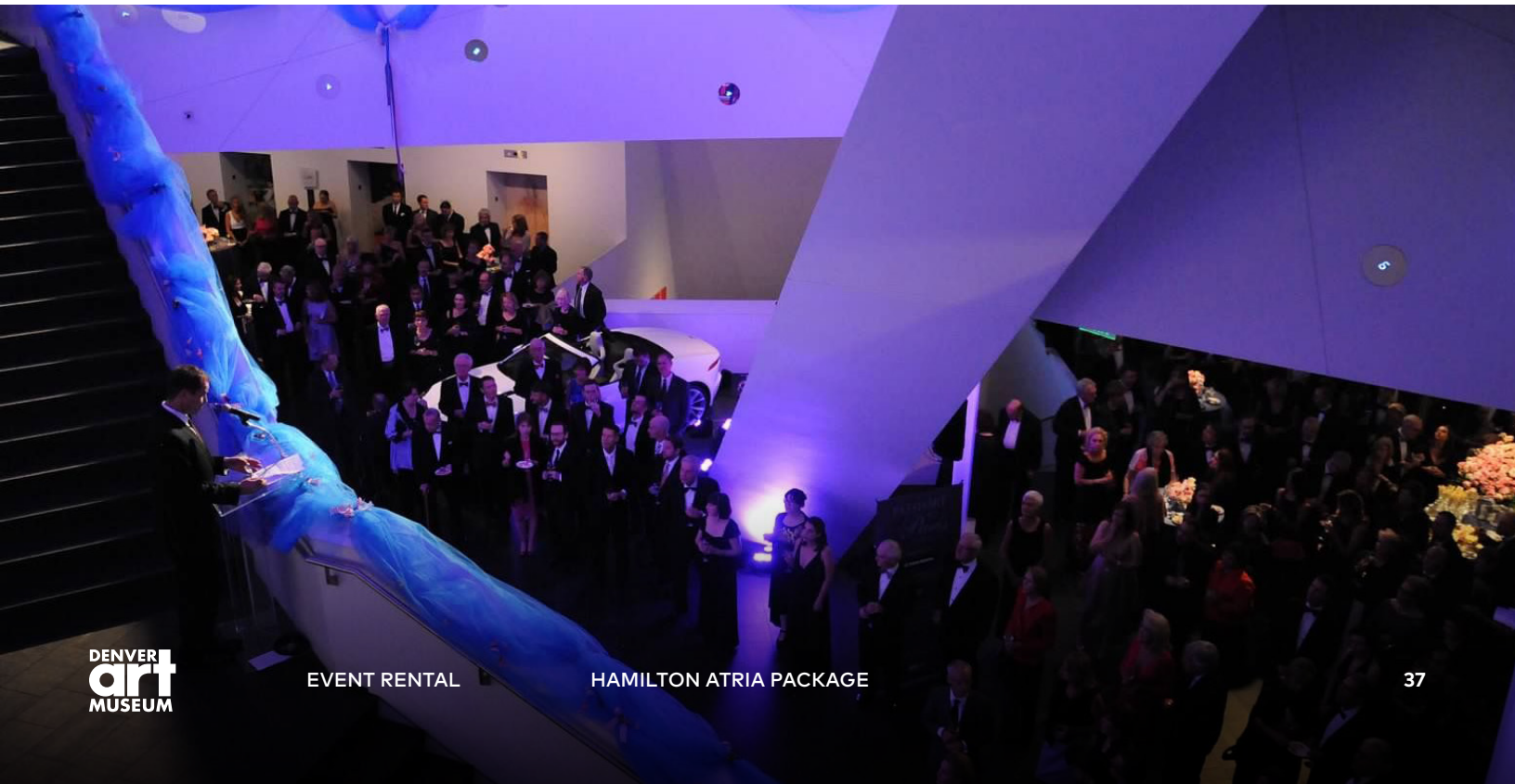
Rental Prices include a limited number of tables, chairs, china, and flatware at no additional charge, subject to availability. Rentals during museum hours include complimentary GA entry to the DAM. Not for profit discount offered at 10% of the space rental.



AV PACKAGE

(4+) speakers, podium, wireless mic,
background music
(25) Uplights
(2) A/V Tech

4 Hours AV Activation: \$1,400
8 Hours AV Activation: \$2,800



Denver Art Museum Campus



DENVER ART MUSEUM

EVENT RENTAL

DENVER
art
MUSEUM

About the campus

The full campus of the Denver Art Museum is available for private bookings after museum hours. Sold as a campus buyout with access to all indoor and outdoor event spaces, galleries, special exhibitions, and more!

CAMPUS CAPACITY: 10,000

RECEPTION CAPACITY: 2,800

SQUARE FOOTAGE: 356,000

RENTAL FEE

HALF DAY:

\$25,000

This includes a 6 hour space use window in the morning prior to 4pm, OR an evening event with load in no sooner than 4pm (Event start 5:30pm or later) . Rate includes 4 hours of event time with one hour of vendor and client set up and one hour of load out. Furniture and AV will be preset.

Morning Half Day Available on Wednesday Only.

FULL DAY (Wed. only):

\$35,000

12 Hour space use that includes an hour of set up, 10 hours of event time, and one hour of break down.
Available on Wednesday Only

Rental Prices include a limited number of tables, chairs, china, and flatware at no additional charge, subject to availability. Rentals during museum hours include complimentary GA entry to the DAM. Not for profit discount offered at 10% of the space rental.

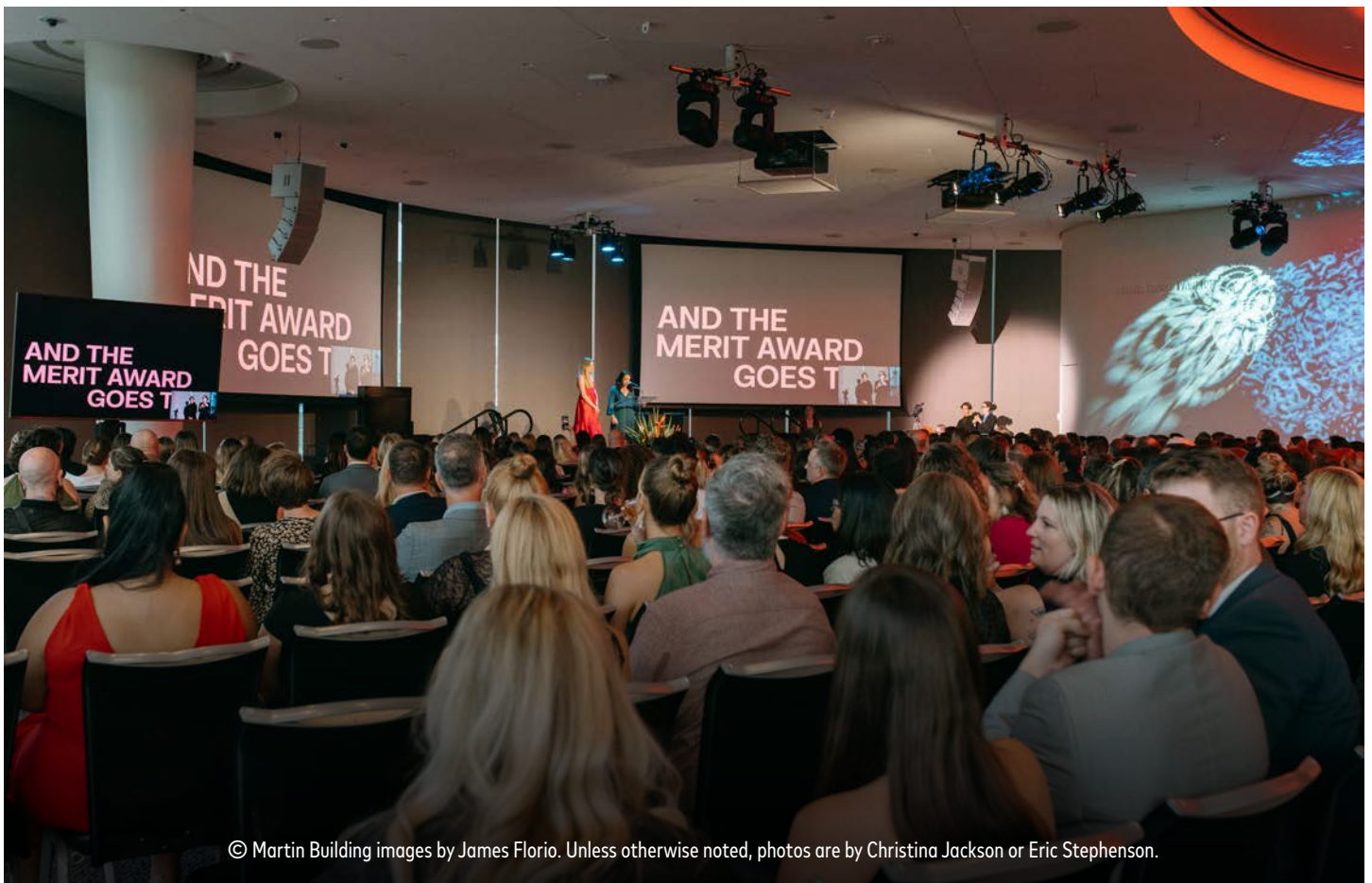


For more information on our rental program, catering information, capabilities, event guidelines and more:

CONTACT

Mary Beth Maggio | *Senior Manager of Event Sales*
720-913-0148
mmaggio@denverartmuseum.org

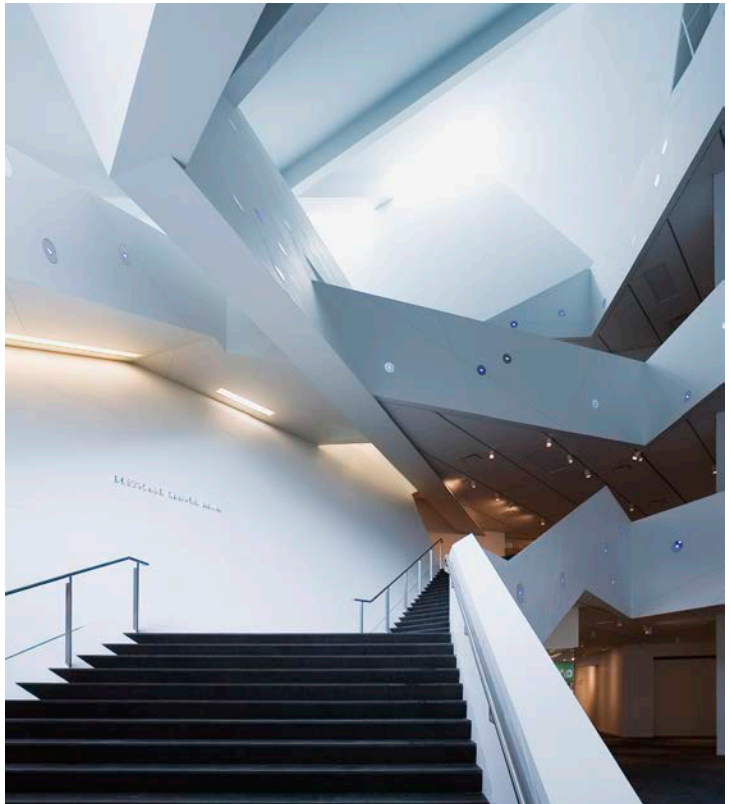
Katelyn Peterson | *Director of Catering Sales*
(720) 913-0061
kpeterson@denverartmuseum.org



© Martin Building images by James Florio. Unless otherwise noted, photos are by Christina Jackson or Eric Stephenson.



THE DAM OFFERS NONPROFIT PRICING ON SPACE RENTAL
CORPORATE PARTNERSHIP OFFERS COMPED EVENT SPACE AND ADDITIONAL BENEFITS
IN-HOUSE CATERING AT THE DENVER ART MUSEUM WILL FULFILL ALL OF YOUR CATERING NEEDS



FOR MORE INFORMATION, PLEASE VISIT:
denverartmuseum.org/event-rental