



Fazal Sheikh: Thirst | Exposure | In Place

PRESS OFFICE
pressoffice@denverartmuseum.org

From the installation ***In Place (Utah, Arizona, and New Mexico, Four Corners Region)***



Fazal Sheikh, from the installation ***In Place (Utah, Arizona, and New Mexico, Four Corners Region)***, 2017-2020. Pigmented inkjet print. © and courtesy Fazal Sheikh.

From the installation ***In Place (Utah, Arizona, and New Mexico, Four Corners Region)***



Fazal Sheikh, from the installation ***In Place (Utah, Arizona, and New Mexico, Four Corners Region)***, 2017-2020. Pigmented inkjet print. © and courtesy Fazal Sheikh.

From the installation ***In Place (Utah, Arizona, and New Mexico, Four Corners Region)***



Fazal Sheikh, from the installation ***In Place (Utah, Arizona, and New Mexico, Four Corners Region)***, 2017-2020. Pigmented inkjet print. © and courtesy Fazal Sheikh.

***Norman Sam (Diné), Lifelong Shepherd, Montezuma Creek,
Aneth Chapter, Southeastern Utah***



Fazal Sheikh, ***Norman Sam (Diné), Lifelong Shepherd, Montezuma Creek, Aneth Chapter, Southeastern Utah***, from the series ***Exposure***, 2019. Pigmented inkjet print. Yale University Art Gallery, purchased with a gift from Jane P. Watkins, M.P.H. 1979. Image courtesy and © Fazal Sheikh.

***Jonah Yellowman (Diné), Spiritual Advisor to Utah Diné Bikéyah,
Cane Valley–Monument Valley, Navajo Nation***



Fazal Sheikh, ***Jonah Yellowman (Diné), Spiritual Advisor to Utah Diné Bikéyah, Cane Valley–Monument Valley, Navajo Nation***, from the series ***Exposure***, 2022. Pigmented inkjet print. © and courtesy Fazal Sheikh.

***Lola Yellowman (Diné), Widow of Uranium Miner John Guy,
Cane Valley–Monument Valley, Navajo Nation***



Fazal Sheikh, ***Lola Yellowman (Diné), Widow of Uranium Miner John Guy, Cane Valley–Monument Valley, Navajo Nation***, from the series ***Exposure***, 2019. Pigmented inkjet print. Yale University Art Gallery, purchased with a gift from Jane P. Watkins, M.P.H. 1979. Image courtesy and © Fazal Sheikh.

From the series ***Thirst: Great Salt Lake***



Fazal Sheikh, from the series ***Thirst: Great Salt Lake***, November 2022. Pigmented inkjet print. © and courtesy Fazal Sheikh.

From the series ***Thirst: Great Salt Lake***



Fazal Sheikh, from the series ***Thirst: Great Salt Lake***, November 2022. Pigmented inkjet print. © and courtesy Fazal Sheikh.

From the series ***Thirst: Great Salt Lake***



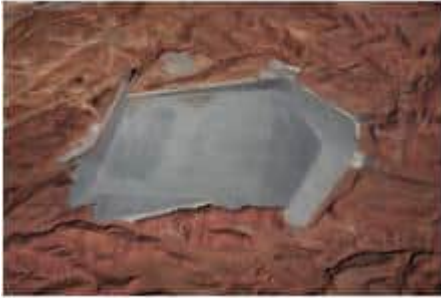
Fazal Sheikh, from the series ***Thirst: Great Salt Lake***, November 2022. Pigmented inkjet print. © and courtesy Fazal Sheikh.

From the series ***Thirst: Great Salt Lake***



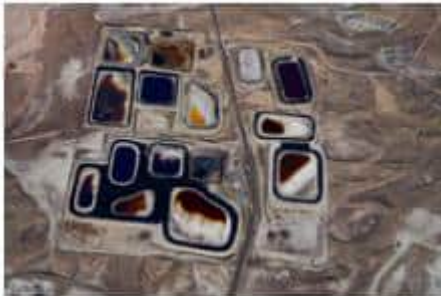
Fazal Sheikh, from the series ***Thirst: Great Salt Lake***, November 2022. Pigmented inkjet print. © and courtesy Fazal Sheikh.

Mexican Hat Uranium Mill Disposal Cell, Mexican Hat, Utah, 37°8'0.88"N/109°52'28"W



Fazal Sheikh, ***Mexican Hat Uranium Mill Disposal Cell, Mexican Hat, Utah, 37°8'0.88"N/109°52'28"W***, from the series ***Exposure***, 2017. Pigmented inkjet print. Yale University Art Gallery, purchased with a gift from Jane P. Watkins, M.P.H. 1979. Image courtesy and © Fazal Sheikh.

Chapita Wells Oil and Gas Field, Uintah Range, Utah, 40°4'10"N/109°27'26"W



Fazal Sheikh, ***Chapita Wells Oil and Gas Field, Uintah Range, Utah, 40°4'10"N/109°27'26"W***, from the series ***Exposure***, 2017. Pigmented inkjet print. Yale University Art Gallery, purchased with a gift from Jane P. Watkins, M.P.H. 1979. Image courtesy and © Fazal Sheikh.

From the installation ***In Place (Utah, Arizona, and New Mexico, Four Corners Region)***



Fazal Sheikh, from the installation ***In Place (Utah, Arizona, and New Mexico, Four Corners Region)***, 2017-2020. Pigmented inkjet print. © and courtesy Fazal Sheikh.