

# DENVER art MUSEUM

100 W. 14th Avenue Pkwy  
Denver, CO 80204-2788  
DENVERARTMUSEUM.ORG



## IMAGE HIGHLIGHTS

### *Near East to Far West: Fictions of French and American Colonialism*

PRESS OFFICE  
pressoffice@denverartmuseum.org

#### ALPHONSE-ÉTIENNE DINET

*Man in a Large Hat (Homme au Grand  
Chapeau)*



Alphonse-Étienne Dinet, *Man in a Large Hat (Homme au Grand Chapeau)*, 1901. Oil paint on canvas; 15¼ × 10½ in. (38.7 × 26.7 cm). Musée d'Orsay and Cité nationale de l'histoire et de l'immigration, Paris: MAAO 9720, LUX 527. © RMN-Grand Palais/Art Resource, NY. Photograph by Daniel Arnaudet.

#### WILLIAM- ADOLPHE BOUGUEREAU

*The Pomegranate Seller*



William- Adolphe Bouguereau, *The Pomegranate Seller*, 1875. Oil paint on canvas; 45½ × 35 in. (115.6 × 88.9 cm). Private collection. Image courtesy Rehs Galleries, Inc., New York City.

#### HENRY FARNY

*Mesa Village*



Henry Farny, *Mesa Village*, about 1891. Gouache on paper; 15 × 9¾ in. (38.1 × 28.8 cm). Denver Art Museum: The Roath Collection, 2014.374.

#### EUGÈNE FROMENTIN

*Bab-el-Gharbi Street in Laghouat (La Rue Bab-el-Gharbi à Laghouat)*

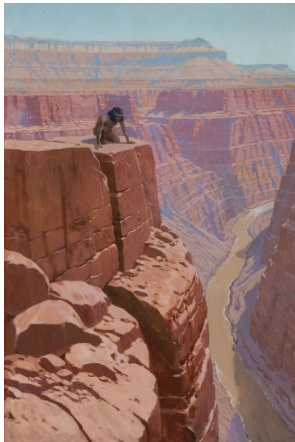


Eugène Fromentin, *Bab-el-Gharbi Street in Laghouat (La Rue Bab-el-Gharbi à Laghouat)*, 1859. Oil paint on canvas; 55⅞ × 40½ in. (142 × 103 cm). Musée de la Chartreuse, Douai, France, 148 ancien dépôt. © RMN-Grand Palais/Art Resource, NY.

**FERNAND LUNGREN**

*In the Abyss: Grand Canyon*

---



Fernand Lungren, *In the Abyss: Grand Canyon*, about 1896. Oil paint on canvas; 60¼ x 40 in. (153 x 101.6 cm). The Art, Design & Architecture Museum, University of California, Santa Barbara: Fernand Lungren Bequest, 1964.659

**LÉON BELLY**

*Pilgrims going to Mecca, (Pèlerins allant à la Mecque)*

---



Léon Belly, *Pilgrims going to Mecca, (Pèlerins allant à la Mecque)*, 1861. Oil paint on canvas; 63 in. x 7 ft. 11¼ in. (160 x 242 cm). Musée d'Orsay, Paris. © RMN-Grand Palais/Art Resource, NY. Photograph by Franck Raux.

**GERALD CASSIDY**

*Midday Sun, North Africa*

---



Gerald Cassidy, *Midday Sun, North Africa*, 1920s. Oil paint on canvas; 64 x 51½ in. (162.6 x 130.8 cm). Private collection. Photography courtesy Denver Art Museum

**ERNEST BLUMENSCHNEIN**

*White Blanket and Blue Spruce*

---

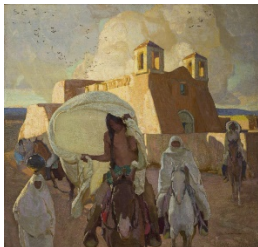


Ernest Blumenschein, American, 1874–1960, *White Blanket and Blue Spruce*. 1922. Oil on linen mounted on paperboard; 34⅞ x 28⅞ in. (86.7 x 71.4 cm). Collection of Vaughn O. Vennerberg II, Dallas, Texas. Courtesy Sotheby's.

**ERNEST L. BLUMENSCHNEIN**

*Church at Ranchos de Taos*

---



Ernest L. Blumenschein, *Church at Ranchos de Taos*, before 1917. Oil paint on canvas; 45 1/2 x 47 1/2 in. Courtesy of American Museum of Western Art --The Anschutz Collection. Photograph by William J. O'Connor

**GERALD CASSIDY**

*Cui Bono?*

---



Gerald Cassidy,  
*Cui Bono?*, about  
1911. Oil paint on  
canvas; 93 1/2 x  
48 in. Collection  
of the New Mexico  
Museum of Art:  
Gift of Gerald  
Cassidy, 1915  
(282.23P). Photo  
by Blair Clark.