



***Age of Armor: Treasures from the Higgins
Collection at the Worcester Art Museum***

PRESS OFFICE
pressoffice@denverartmuseum.org

POMPEO DELLA CESA
Field Armor from a Garniture



Pompeo della Cesa, *Field Armor from a Garniture*, about 1595. Steel, iron, brass, gold, silver, leather, fabric; 56.6 × 10.5 cm (22-5/16 × 4-1/8 in.), 47 lb., 15 oz. (weight). The John Woodman Higgins Armory Collection, 2014.112. Image ©2021 Worcester Art Museum, all rights reserved.

NAGASONE TOJIRO MITSUMASA
Helmet in the form of a Sea Conch Shell



Nagasone Tojiro Mitsumasa, *Helmet in the form of a Sea Conch Shell*, 1618. Iron with traces of lacquer, textiles; 22.9 × 30.5 × 26.7 cm (9 × 12 × 10-1/2 in.), 3 lb., 13 oz. (weight). The John Woodman Higgins Armory Collection, 2014.89.1.

VIRGIL ORTIZ
St. Michael



Virgil Ortiz (Cochiti), *St. Michael*, 2013. Clay, slip, and paint; 16-1/4 × 9 × 7 in. Gift from Vicki and Kent Logan to the Collection of the Denver Art Museum, 2016.111A-D. ©Virgil Ortiz.

**MASTER "MR", GERMAN, FROM THE AREA
OF NUREMBERG**
*Comb Morion for the Guard of Christian I or II,
Electors of Saxony*



Master "MR", German, from the area of Nuremberg, *Comb Morion for the Guard of Christian I or II, Electors of Saxony*, about 1585-1595. Blackened steel with etched and gilded decoration, brass, textile and leather; 27.9 × 24.4 × 35.7 cm (11 × 9-5/8 × 14-1/16 in.), 4 lb. (weight). The John Woodman Higgins Armory Collection, 2014.48. Image ©2021 Worcester Art Museum, all rights reserved.

POSSIBLY FROM THE GREEK COLONIES IN SOUTHERN FRANCE

Corinthian Helmet



Possibly from the Greek colonies in Southern France, *Corinthian Helmet*, about 600–550 BCE. Bronze; 20.3 × 19.1 × 26.7 cm (8 × 7-1/2 × 10-1/2 in.), 3 lb., 10 oz. (weight). The John Woodman Higgins Armory Collection, 2014.7. Image ©2021 Worcester Art Museum, all rights reserved.

SOUTHERN GERMAN, FROM THE AREA OF AUGSBURG

Close Helmet for the Foot Tourney



Southern German, from the area of Augsburg, *Close Helmet for the Foot Tourney*, about 1590. Steel, brass and leather fragments, steel formerly blued) with etching and gilding, and brass; 31.8 × 22.9 × 34.3 cm (12-1/2 × 9 × 13-1/2 in.), 11 lb., 15 oz. (weight). The John Woodman Higgins Armory Collection, 2014.1113. Image ©2021 Worcester Art Museum, all rights reserved.

SOUTHERN GERMAN, FROM THE AREA OF AUGSBURG

Shaffron (Horse's head armor)



Southern German, from the area of Augsburg, *Shaffron (Horse's head armor)*, about 1560. Etched and gilded steel, brass and leather; 61 × 27.9 × 21.6 cm (24 × 11 × 8-1/2 in.), 3 lb., 14 oz. (weight). The John Woodman Higgins Armory Collection, 2014.10.1.1. Image ©2021 Worcester Art Museum, all rights reserved.

ARMOR ATTRIBUTED TO KOLMAN HELMSCHMID, ETCHED STEEL PERHAPS BY HANS BURGKMAIR THE ELDER

Reinforcing Breastplate for the Joust with Left Tasset



Armor attributed to Kolman Helmschmid, etched steel perhaps by Hans Burgkmair the Elder, *Reinforcing Breastplate for the Joust with Left Tasset*, 1520-1525. Etched steel and brass with modern leather; breastplate: 48.3 × 34.3 × 15.2 cm (19 × 13-1/2 × 6 in.), 6 lb., 4 oz. (weight), tasset: 33 × 23.5 cm (13 × 9-1/4 in.), 2 lb., 12 oz. (weight). The John Woodman Higgins Armory Collection, 2014.1138.3 and 2014.1138. Image ©2021 Worcester Art Museum, all rights reserved.

WORKSHOPS OF WOLF AND PETER VON SPEYER OR WOLF PEPPINGHORN

Rennzeug (armor for the 'joust of war')



Workshops of Wolf and Peter von Speyer or Wolf Peppinghorn, *Rennzeug (armor for the 'joust of war')*, about 1590-1600. Steel, iron, leather, black paint, textile and horsehair stuffing, 93 lb., 1 oz. (weight). The John Woodman Higgins Armory Collection, 2014.1154. Image ©2021 Worcester Art Museum, all rights reserved.

HANS HÖRBURGER THE ELDER

Comb Morion



Hans Hörburger the Elder, *Comb Morion*, about 1556-1586. Steel, brass and leather fragments; 22.9 × 21.6 × 31.8 cm (9 × 8-1/2 × 12-1/2 in.), 2 lb., 10 oz. (weight). The John Woodman Higgins Armory Collection, 2014.1094. Image ©2021 Worcester Art Museum, all rights reserved.

WOLFGANG STÄNTLER

Swept-Hilt Sword for the Munich Town Guard



Wolfgang Stäntler, *Swept-Hilt Sword for the Munich Town Guard*, about 1600. Steel, iron with blueing, and wood; 101.9 × 85.1 × 4.5 × 18 cm (40-1/8 × 33-1/2 × 1-3/4 × 7-1/16 in.), 3 lb., 3 oz. (weight). The John Woodman Higgins Armory Collection, 2014.52. Image ©2021 Worcester Art Museum, all rights reserved.

SOUTHERN GERMAN

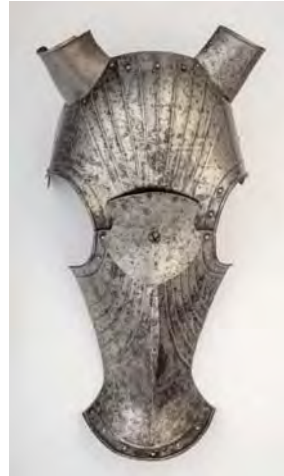
'Maximilian' Field Armor holding a Warhammer for a Horseman



Southern German, *'Maximilian' Field Armor holding a Warhammer for a Horseman*, about 1525-1530. Armor: steel, iron, and leather with modern restorations; 64 lb., 14 oz. (weight), warhammer: etched and blackened steel; 56.6 × 10.5 cm (22-5/16 × 4-1/8 in.), 2 lb., 12 oz. (weight). The John Woodman Higgins Armory Collection, 2014.111 and 2014.469. Image ©2021 Worcester Art Museum, all rights reserved.

SOUTHERN GERMAN

Shaffron (Horse's head armor) in the Maximilian style



Southern German, *Shaffron (Horse's head armor) in the Maximilian style*, about 1520. Steel; 63 × 29 × 20 cm (24-13/16 × 11-7/16 × 7-7/8 in.), 3 lb., 2 oz. (weight). The John Woodman Higgins Armory Collection, 2014.16. Image ©2021 Worcester Art Museum, all rights reserved.

MASTER "IA", NORTHERN ITALIAN, FROM THE AREA OF MILAN

Infantry Breastplate 'in the German style'



Master "IA", Northern Italian, from the area of Milan, *Infantry Breastplate 'in the German style'*, about 1480. Steel with modern leather; 53.3 × 35.6 × 17.8 cm (21 × 14 × 7 in.), 6 lb., 4 oz. (weight). The John Woodman Higgins Armory Collection, 2014.50. Image ©2021 Worcester Art Museum, all rights reserved.

PERHAPS ITALIAN

Target (shield) with Breech-Loading Gun



Perhaps Italian, *Target (shield) with Breech-Loading Gun*, about 1540. Wood, steel, tinned iron, brass and fabric with paint and modern restorations; 7.5 × 48.6 × 28 cm (2-15/16 × 19-1/8 × 11 in.), 9 lb., 10 oz. (weight). The John Woodman Higgins Armory Collection, 2014.768. Image ©2021 Worcester Art Museum, all rights reserved.

MASTER H.W.

Pair of Wheel-Lock Holster Pistols



Master H.W., *Pair of Wheel-Lock Holster Pistols*, about 1650. Steel, snakewood, bone or horn, gilt brass, and iron; 67.3 × 48.4 cm (26-1/2 × 19-1/16 in.), 2 lb., 8 oz. (weight). The John Woodman Higgins Armory Collection, 2014.433.1-2014.433.2. Image ©2021 Worcester Art Museum, all rights reserved.

MANUFACTURED BY WORCESTER PRESSED STEEL

Prototype Experimental Helmet Model 2



Manufactured by Worcester Pressed Steel, *Prototype Experimental Helmet Model 2*, 1917. Steel; 27 × 27 × 37 cm (10-5/8 × 10-5/8 × 14-9/16 in.), 2 lb. (weight). The John Woodman Higgins Armory Collection, 2014.2. Image ©2021 Worcester Art Museum, all rights reserved.

COLONIAL AMERICAN (MASSACHUSETTS)

Halberd for an officer of the Trained Band



Colonial American (Massachusetts), *Halberd for an officer of the Trained Band*, 1678. Steel and wood (probably maple); 22 × 213 × 44 cm (8-11/16 × 83-7/8 × 17-5/16 in.), 3 lb., 12 oz. (weight). The John Woodman Higgins Armory Collection, 2014.69. Image ©2021 Worcester Art Museum, all rights reserved.

AFRICAN, FROM THE SUDANIC REGION

Helmet



African, from the Sudanic Region, *Helmet*, 1800s. Russeted iron with gilding; 30 × 54 × 21 cm (11-13/16 × 21-1/4 × 8-1/4 in.), 5 lb., 9 oz. (weight). The John Woodman Higgins Armory Collection, 2014.91. Image ©2021 Worcester Art Museum, all rights reserved.

NETHERLANDISH

Pikeman's Armor with Helmet for a Harquebusier, later decorated for ceremonial use



Netherlandish, *Pikeman's Armor with Helmet for a Harquebusier, later decorated for ceremonial use*, about 1625-1650, decorated in 1700s. Steel, iron and paint with modern leather, 16 lb., 10 oz. (weight). The John Woodman Higgins Armory Collection, 2014.1132. Image ©2021 Worcester Art Museum, all rights reserved.

WESTERN EUROPEAN, HILT IS POSSIBLY ENGLISH

Broadsword of the 'Castillon' Group



Western European, hilt is possibly English, *Broadsword of the 'Castillon' Group*, 1400-1450. Steel with traces of organic materials from grip and scabbard; 92.7 × 73.7 × 5 × 21.5 cm (36-1/2 × 29 × 1-15/16 × 8-7/16 in.), 3 lb., 8 oz. (weight). The John Woodman Higgins Armory Collection, 2014.56. Image ©2021 Worcester Art Museum, all rights reserved.