

A low-angle, upward-looking photograph of a modern architectural courtyard. The ceiling is composed of large, light-colored panels with a grid of small, square perforations that allow light to filter through, creating a starry pattern. In the center, a tall, dark blue building with a series of vertical, rectangular openings is visible. The sky is a clear, deep blue. The overall atmosphere is one of modern elegance and architectural detail.

**Event Rental**

DENVER  
**art**  
MUSEUM



**The Denver Art Museum offers inspired spaces, sparkling amenities, and the perfect location for your next event.**

Our stunning event spaces are ideal for hosting sumptuous galas, corporate receptions, holiday parties, weddings, intimate dinners, and every special event in-between.

- ▲ INTIMATE GROUPS OF 10 UP TO 10,000 GUESTS
- ▲ 11 INDOOR SPACES AND 5 OUTDOOR SPACES
- ▲ ACCESS TO THE MUSEUM'S COLLECTIONS AND SPECIAL EXHIBITIONS
- ▲ IN-HOUSE CATERING AND AUDIOVISUAL

By booking your event at the DAM, you are supporting our mission — to enrich the lives of present and future generations through the acquisition, presentation, and preservation of works of art.



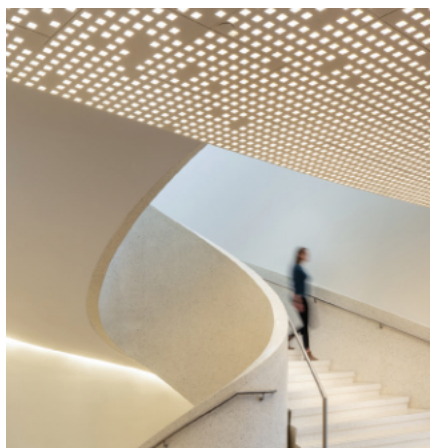


## Lanny and Sharon Martin Building



In 1971, the museum opened what is now known as the Martin Building, designed by Italian master of modern design Gio Ponti. This architectural marvel recently underwent a multi-year renovation and now features all new indoor and outdoor event spaces, a restaurant with private dining, and seven floors of collections galleries.

- ▲ RECEPTION CAPACITY: 6500
- ▲ SQUARE FOOTAGE: 210,000
- ▲ PRICE: \$ 15,000



Priced for a four-hour event rental, with an hour each for setup and teardown. Rental prices include a limited number of tables, chairs, china, and flatware at no additional charge, subject to availability. Rentals during museum hours include complimentary GA entry to the DAM.



## Lanny and Sharon Martin Building

Kemper Courtyard and Amphitheater

DENVER  
**art**  
MUSEUM

A beautiful, multi-tiered outdoor space with landscaped trees and lighted paths. Featuring Deborah Butterfield sculptures, an elevated amphitheater, and views of the Martin Building. Kemper Courtyard and Amphitheatre comes with comes with the delightfully designed Wonderscape as an indoor adjacency.

- ▲ RECEPTION CAPACITY: 190
- ▲ SQUARE FOOTAGE: 2859
- ▲ PRICE: \$ 4000



Priced for a four-hour event rental, with an hour each for setup and teardown. Rental prices include a limited number of tables, chairs, china, and flatware at no additional charge, subject to availability. Rentals during museum hours include complimentary GA entry to the DAM.



## Lanny and Sharon Martin Building

### The Prow Garden



A triangular, paved garden with views of the Denver skyline and Civic Center Park. Seamless event flow with the Garden Room and the Kemper Courtyard and Amphitheatre. Perfect for wedding ceremonies, tributes, cocktail hours, outdoor receptions, and intimate gatherings.

- ▲ RECEPTION CAPACITY: 200
- ▲ SQUARE FOOTAGE: 2993
- ▲ PRICE: \$ 3500
- ▲ WITH GARDEN ROOM AND SENSORY GARDEN TERRACE  
PRICE: \$ 5500



Priced for a four-hour event rental, with an hour each for setup and teardown. Rental prices include a limited number of tables, chairs, china, and flatware at no additional charge, subject to availability. Rentals during museum hours include complimentary GA entry to the DAM.



## Lanny and Sharon Martin Building

### The Garden Room



A beautiful event space perfect for intimate receptions, staff retreats, rehearsal dinners, or as a staging suite for weddings. The Garden Room features state-of-the-art AV, pathways to both the Prow Garden and Sensory Garden, and an exquisite piece by Phillip Taaffe. Available for all-day rental.

- ▲ RECEPTION CAPACITY: 110  
SEATED CAPACITY: 80  
SENSORY GARDEN TERRACE CAPACITY: 40
- ▲ SQUARE FOOTAGE  
GARDEN ROOM: 1053  
SENSORY GARDEN TERRACE: 1495
- ▲ PRICE OUTSIDE OF MUSEUM HOURS  
GARDEN ROOM: \$1250  
GARDEN ROOM PLUS SENSORY GARDEN TERRACE: \$1500
- ▲ PRICE DURING MUSEUM HOURS  
GARDEN ROOM: \$750

Priced for a four-hour event rental, with an hour each for setup and teardown. Rental prices include a limited number of tables, chairs, china, and flatware at no additional charge, subject to availability. Rentals during museum hours include complimentary GA entry to the DAM.





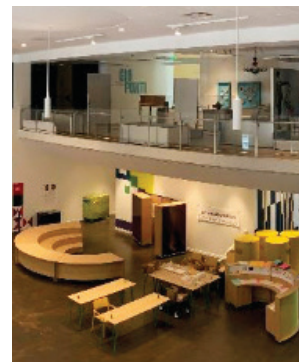
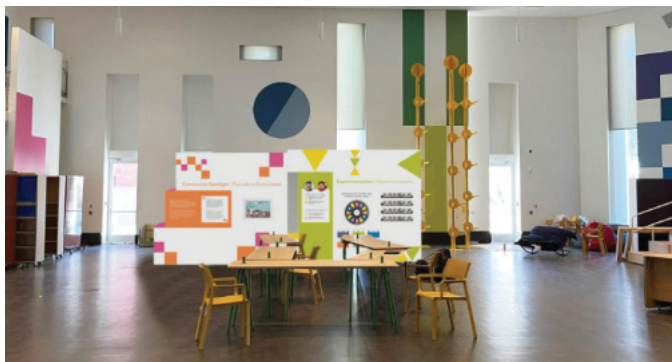
## Lanny and Sharon Martin Building

The Morgridge Creative Hub with Terrace

DENVER  
**art**  
MUSEUM

The heart of Learning and Engagement at the Denver Art Museum, this quirky, unique and interactive event space serves as a connecting point to spark artistic expression, foster connection, and celebrate creativity. Designed in collaboration with the renowned design team of Esrawe + Cadena.

- ▲ RECEPTION CAPACITY: 200  
SEATED CAPACITY: 100  
TERRACE CAPACITY: 150
- ▲ SQUARE FOOTAGE: 5118
- ▲ PRICE  
CREATIVE HUB: \$ 1250  
WITH CREATIVE HUB TERRACE: \$ 1500



Priced for a four-hour event rental, with an hour each for setup and teardown. Rental prices include a limited number of tables, chairs, china, and flatware at no additional charge, subject to availability. Rentals during museum hours include complimentary GA entry to the DAM.



## Lanny and Sharon Martin Building

### Sturm Grand Pavilion



The Sturm Grand Pavilion is our premiere event space on level two of the Sie Welcome Center. Enclosed in a fluted glass façade, this stunning space provides sweeping views of downtown Denver, state-of-the-art AV, and complimentary access to all galleries on the second level of the Martin Building. For your gala, wedding, holiday party, awards ceremony, or large reception.

- ▲ RECEPTION CAPACITY: 950  
SEATED CAPACITY: 550
- ▲ SQUARE FOOTAGE: 14,450
- ▲ PRICE: \$ 8000



Priced for a four-hour event rental, with an hour each for setup and teardown. Rental prices include a limited number of tables, chairs, china, and flatware at no additional charge, subject to availability. Rentals during museum hours include complimentary GA entry to the DAM.





## Lanny and Sharon Martin Building

### South Sturm Pavilion



An airwall partition separates the South Sturm Pavilion into a private event space perfect for luncheons, seated dinner, meetings, and receptions. Offers a large circular space featuring floor to ceilings fluted glass windows, state-of-the-art AV, and more. Available for rental before, during, and after museum hours.

- ▲ RECEPTION CAPACITY: 450  
SEATED CAPACITY: 250
- ▲ SQUARE FOOTAGE: 4900
- ▲ PRICE OUTSIDE OF MUSEUM HOURS: \$ 6000
- ▲ PRICE DURING MUSEUM HOURS: \$ 4000



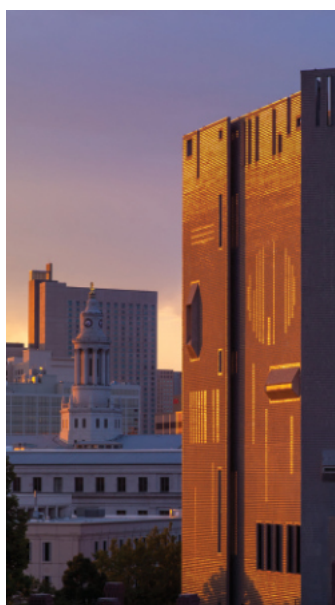
Priced for a four-hour event rental, with an hour each for setup and teardown. Rental prices include a limited number of tables, chairs, china, and flatware at no additional charge, subject to availability. Rentals during museum hours include complimentary GA entry to the DAM.



## Lanny and Sharon Martin Building

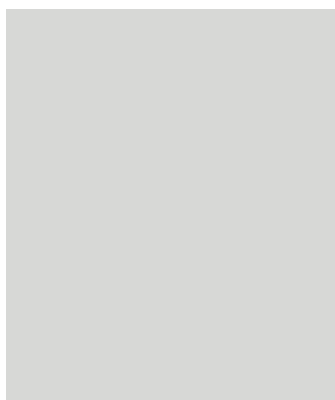
**The Seventh Floor Summit Room  
with Sie and Johnson Terraces**

**DENVER  
art  
MUSEUM**



A gallery and indoor event space that offer sweeping views of the Front Range from North to South, plus access to two adjoining rooftop terraces. Event rental includes the Summit Room, the Sie and Johnson Terraces, plus access to the north galleries of the Western American Art collection.

- ▲ CAPACITY  
SUMMIT ROOM: 35  
JOHNSON TERRACE: 100  
SIE TERRACE: 35
- ▲ SQUARE FOOTAGE: 3464
- ▲ PRICE: \$3250



Priced for a four-hour event rental, with an hour each for setup and teardown. Rental prices include a limited number of tables, chairs, china, and flatware at no additional charge, subject to availability. Rentals during museum hours include complimentary GA entry to the DAM.



## Lanny and Sharon Martin Building

### Galleries — All Levels



The Martin Building features seven floors of permanent collection galleries and houses a unique and expansive collection on every floor. Galleries may be rented for private self-led access, private tours, and more.

- ▲ NO FOOD OR BEVERAGES ARE PERMITTED IN ANY DAM GALLERY
- ▲ PRICE: \$ 750 PER GALLERY (WILL VARY FOR SPECIAL EXHIBITIONS)



Priced for a four-hour event rental, with an hour each for setup and teardown. Rental prices include a limited number of tables, chairs, china, and flatware at no additional charge, subject to availability. Rentals during museum hours include complimentary GA entry to the DAM.





## Lanny and Sharon Martin Building

The Ponti Restaurant with Terrace

DENVER  
**art**  
MUSEUM

The Ponti Restaurant combines art and elegant dining, with a locally-sourced and inspired menu designed by James Beard Award winner and celebrated Denver chef Jennifer Jasinski.

- ▲ SEATED CAPACITY: 123
- ▲ SQUARE FOOTAGE: 1382
- ▲ PRICE: \$ 1500 PRIVATE RENTAL – PLUS  
\$ 5000 FOOD AND BEVERAGE MINIMUM



Priced for a four-hour event rental, with an hour each for setup and teardown. Rental prices include a limited number of tables, chairs, china, and flatware at no additional charge, subject to availability. Rentals during museum hours include complimentary GA entry to the DAM.



## Lanny and Sharon Martin Building

### The Ponti Private Dining Room



The Ponti Private Dining Room is a sophisticated dining space equipped with state-of-the-art AV and elegant aesthetics. Perfect for intimate gatherings, corporate meetings, rehearsal dinners, and more.

- ▲ SEATED CAPACITY: 32
- ▲ SQUARE FOOTAGE: 638
- ▲ PRICE: \$ 550 PRIVATE RENTAL – PLUS  
\$ 1500 FOOD AND BEVERAGE MINIMUM



Priced for a four-hour event rental, with an hour each for setup and teardown. Rental prices include a limited number of tables, chairs, china, and flatware at no additional charge, subject to availability. Rentals during museum hours include complimentary GA entry to the DAM.

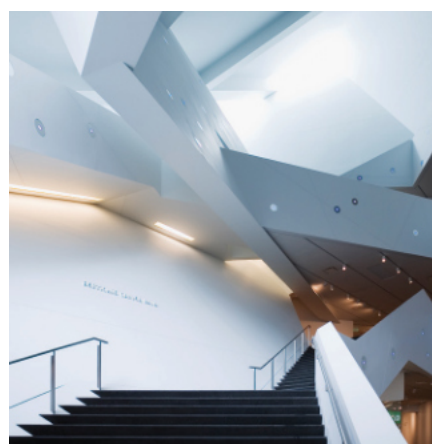


## Frederic C. Hamilton Building

DENVER  
**art**  
MUSEUM

The Hamilton Building's iconic Daniel Libeskind-designed architecture is adaptable to events of all formats and scale. It offers easy access to extraordinary art experiences, such as past exhibitions like *Star Wars™* and the *Power of Costume*, *Claude Monet: The Truth of Nature*, and *Dior: From Paris to the World*, to name a few.

- ▲ RECEPTION CAPACITY: 4000
- ▲ SQUARE FOOTAGE: 146,000
- ▲ PRICE: \$10,000



Priced for a four-hour event rental, with an hour each for setup and teardown. Rental prices include a limited number of tables, chairs, china, and flatware at no additional charge, subject to availability. Rentals during museum hours include complimentary GA entry to the DAM.





## Frederic C. Hamilton Building

### Sharp Auditorium and Lobby



The Lewis I. Sharp Auditorium provides a dynamic touch for corporate meetings, symposiums, keynote addresses, lectures, or conferences. Includes use of the Sharp Lobby for registration and reception.

- ▲ AUDITORIUM CAPACITY: 266  
LOBBY CAPACITY: 125  
SEATED CAPACITY: 60
- ▲ LOBBY SQUARE FOOTAGE: 950
- ▲ PRICE OUTSIDE OF MUSEUM HOURS: \$ 1500
- ▲ PRICE DURING MUSEUM HOURS: \$ 1250



Priced for a four-hour event rental, with an hour each for setup and teardown. Rental prices include a limited number of tables, chairs, china, and flatware at no additional charge, subject to availability. Rentals during museum hours include complimentary GA entry to the DAM.



## Frederic C. Hamilton Building

### Sharp Lobby

DENVER  
**art**  
MUSEUM

An open, angular, and interesting event space directly outside of Sharp Auditorium and Congdon Boardroom. Featuring models by designer Herbert Bayer.

- ▲ RECEPTION CAPACITY: 125  
SEATED CAPACITY: 60
- ▲ LOBBY SQUARE FOOTAGE: 950
- ▲ PRICE OUTSIDE OF MUSEUM HOURS: \$ 1000
- ▲ PRICE DURING MUSEUM HOURS: \$ 500



Priced for a four-hour event rental, with an hour each for setup and teardown. Rental prices include a limited number of tables, chairs, china, and flatware at no additional charge, subject to availability. Rentals during museum hours include complimentary GA entry to the DAM.



## Frederic C. Hamilton Building

### Congdon Boardroom



The Congdon Boardroom provides an elegant setting for meetings, events, and corporate retreats. The room is beautifully adorned with bold, modern textiles by Alexander Calder.

- ▲ SEATED CAPACITY: 50
- ▲ SQUARE FOOTAGE: 1110
- ▲ PRICE OUTSIDE OF MUSEUM HOURS: \$ 1000
- ▲ PRICE DURING MUSEUM HOURS: \$ 500



Priced for a four-hour event rental, with an hour each for setup and teardown. Rental prices include a limited number of tables, chairs, china, and flatware at no additional charge, subject to availability. Rentals during museum hours include complimentary GA entry to the DAM.





## Frederic C. Hamilton Building

### HAMILTON LOWER LEVEL PACKAGE

Sharp Auditorium | Sharp Lobby | Congdon Boardroom



Enjoy private access to the entire lower level of the Hamilton Building. Perfect for conferences, lectures, and programs in need of break-out, VIP, or green room areas plus private reception space.

- ▲ AUDITORIUM CAPACITY: 275  
LOBBY CAPACITY: 125  
CONGDON BOARDROOM CAPACITY: 50
- ▲ SQUARE FOOTAGE: 2050 (PLUS AUDITORIUM)
- ▲ PRICE OUTSIDE OF MUSEUM HOURS: \$ 2500
- ▲ PRICE DURING MUSEUM HOURS: \$ 1750



Priced for a four-hour event rental, with an hour each for setup and teardown. Rental prices include a limited number of tables, chairs, china, and flatware at no additional charge, subject to availability. Rentals during museum hours include complimentary GA entry to the DAM.



## Frederic C. Hamilton Building

### El Pomar Atrium

DENVER  
**art**  
MUSEUM

Sloping walls, black granite floors, a magnificent staircase, and dynamic architectural design. The El Pomar Atrium features stunning event space and convenient access to fresh exhibitions at the DAM.

- ▲ RECEPTION CAPACITY: 400  
SEATED CAPACITY: 175
- ▲ SQUARE FOOTAGE: 5000
- ▲ PRICE: \$ 4000



Priced for a four-hour event rental, with an hour each for setup and teardown. Rental prices include a limited number of tables, chairs, china, and flatware at no additional charge, subject to availability. Rentals during museum hours include complimentary GA entry to the DAM.



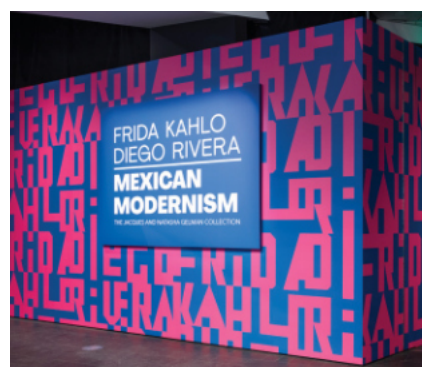
## Frederic C. Hamilton Building

### Level Two Atrium

DENVER  
**art**  
MUSEUM

A mid-size event space directly adjacent to the DAM's special exhibition galleries and the *19th Century in European and American Art* painting and sculpture galleries. The Level Two Atrium provides stunning architectural views, event space in the round, and close proximity to Sturm Grand Pavilion via the Reiman Bridge.

- ▲ RECEPTION CAPACITY: 250  
SEATED CAPACITY: 100
- ▲ SQUARE FOOTAGE: 1274
- ▲ PRICE: \$ 2500



Priced for a four-hour event rental, with an hour each for setup and teardown. Rental prices include a limited number of tables, chairs, china, and flatware at no additional charge, subject to availability. Rentals during museum hours include complimentary GA entry to the DAM.





## Frederic C. Hamilton Building

### HAMILTON ATRIA PACKAGE

El Pomar Atrium | Level Two Atrium

DENVER  
**art**  
MUSEUM

For a complete event experience in the Hamilton Building, the EL Pomar and Level Two Atria combine to provide the perfect atmosphere for large parties and unforgettable occasions.

- ▲ RECEPTION CAPACITY: 650  
SEATED CAPACITY: 275
- ▲ SQUARE FOOTAGE: 6274
- ▲ PRICE: \$ 5000



Priced for a four-hour event rental, with an hour each for setup and teardown. Rental prices include a limited number of tables, chairs, china, and flatware at no additional charge, subject to availability. Rentals during museum hours include complimentary GA entry to the DAM.



## Frederic C. Hamilton Building

### Galleries



The Hamilton Building features both permanent gallery spaces and special exhibition gallery spaces.

- ▲ NO FOOD OR BEVERAGES ARE PERMITTED IN ANY DAM GALLERY
- ▲ PRICE: \$ 800 PER GALLERY (WILL VARY FOR SPECIAL EXHIBITIONS)



Current and upcoming exhibitions include:

- ▲ *The 19th Century in European and American Art*
- ▲ *Traitor, Survivor, Icon: The Legacy of La Malinche*
- ▲ *Whistler to Cassatt: American Painters in France*

Priced for a four-hour event rental, with an hour each for setup and teardown. Rental prices include a limited number of tables, chairs, china, and flatware at no additional charge, subject to availability. Rentals during museum hours include complimentary GA entry to the DAM.



# Denver Art Museum Campus

## Hamilton and Martin Buildings



The full campus of the Denver Art Museum is available for private bookings after museum hours. Sold as a full campus buyout with access to all indoor and outdoor event spaces, galleries, special exhibitions, and more!

- ▲ RECEPTION CAPACITY: 10,000
- ▲ SQUARE FOOTAGE: 356,000
- ▲ PRICE: \$ 22,000



Priced for a four-hour event rental, with an hour each for setup and teardown. Rental prices include a limited number of tables, chairs, china, and flatware at no additional charge, subject to availability. Rentals during museum hours include complimentary GA entry to the DAM.

**For a full list of rental spaces, catering information,  
AV capabilities, event guidelines, and more:**



## **CONTACT**

**Jessica Lovell** | *Events Manager*

720-913-0148

[jlovell@denverartmuseum.org](mailto:jlovell@denverartmuseum.org)

**Hillary MacArthur** | *Director of Catering*

720-913-0081

[hmacarthur@denverartmuseum.org](mailto:hmacarthur@denverartmuseum.org)

## **VISIT**

[denverartmuseum.org/event-rental](https://denverartmuseum.org/event-rental)

- ▲ THE DAM OFFERS NONPROFIT PRICING ON SPACE RENTAL
- ▲ CORPORATE PARTNERSHIP OFFERS COMPED EVENT SPACE AND ADDITIONAL BENEFITS
- ▲ IN-HOUSE CATERING AT THE DENVER ART MUSEUM WILL FULFILL ALL OF YOUR CATERING NEEDS



Martin Building images by James Florio. Unless otherwise noted, photos are by Christina Jackson or Eric Stephenson.



