

# DENVER art MUSEUM

100 W. 14th Avenue Pkwy  
Denver, CO 80204-2788  
DENVERARTMUSEUM.ORG

## IMAGE HIGHLIGHT SHEET

### *Paris to Hollywood: The Fashion and Influence of Véronique and Gregory Peck*

SHADIA LEMUS  
720-913-0096 | slemus@denverartmuseum.org  
JENA PRUETT  
720-913-0079 | jpruett@denverartmuseum.org

#### **VÉRONIQUE AND GREGORY PECK**

*Photo by Jack Albin/Archive Photos  
Collection/Getty Images, 1956*



Véronique and Gregory at the premiere of director Nunnally Johnson's film, *The Man in the Gray Flannel Suit*, 1956. Photo by Jack Albin/Archive Photos Collection/Getty Images.

#### **EMILIO PUCCI FOR PUCCI, FLORENCE**

*Ensemble: Jacket and Pants (detail), 1965*



Emilio Pucci for Pucci, Florence, *Ensemble: Jacket and Pants (detail)*, 1965. Silk chiffon printed with "Gioielli" motif and beads..

#### **YVES SAINT LAURENT, PARIS**

*Haute Couture Fall-Winter 1969-70*



Yves Saint Laurent, Paris, *Dress*, Haute Couture Fall-Winter 1969-70, Look 104. Synthetic lamé by Abraham (textile house), Zurich, with beading by Maison Lesage (embroidery house), Paris, with silk lining. Prototype (original runway wedding dress with bodice modification).

#### **THEA PORTER, LONDON**

*Dress and Scarf, about 1975*



Thea Porter, London, *Dress and Scarf*, about 1975. Embroidered silk chiffon with sequins and synthetic lining.

**YVES SAINT LAURENT, PARIS**

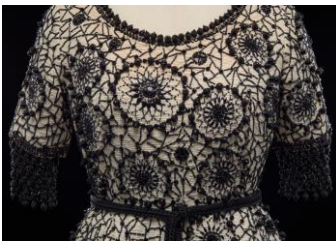
*Dress, Haute Couture Spring-Summer 1967, Look 62*



Yves Saint Laurent, Paris, *Dress*, Haute Couture Spring-Summer 1967, Look 62. Synthetic piqué with beading by Lanel (embroidery house), Paris, and silk lining. Prototype (original runway piece).

**YVES SAINT LAURENT, PARIS**

*Dress (detail), Haute Couture Spring-Summer 1967, Look 62*



Yves Saint Laurent, Paris, *Dress (detail)*, Haute Couture Spring-Summer 1967, Look 62. Synthetic piqué with beading by Lanel (embroidery house), Paris, and silk lining. Prototype (original runway piece).

**YVES SAINT LAURENT, PARIS**

*Ensemble: Blouse and Skirt, Haute Couture Fall-Winter 1976-77, Look 77*



Yves Saint Laurent, Paris, *Ensemble: Blouse and Skirt*, Haute Couture Fall-Winter 1976-77, Look 77. Blouse and skirt in silk lamé by Bianchini-Férier (textile house), Lyon, France; cotton velvet belt with applied rhinestones and metallic trim. Prototype (original runway piece).

**GUY LAROCHE, PARIS**

*Dress, Haute Couture about 1985*



Guy Laroche, Paris. *Dress*, Haute Couture about 1985. Synthetic taffeta and nylon net. Véronique Peck Collection at the Denver Art Museum: Gift of Cecilia Peck Voll.

**CRISTÓBAL BALENCIAGA FOR BALENCIAGA, PARIS**

*Dress with Belt, Haute Couture about 1960*



Cristóbal Balenciaga for Balenciaga, Paris. *Dress with Belt*, Haute Couture about 1960, Silk gazar.

**PIERRE CARDIN, PARIS**

*Coatdress, Haute Couture 1951*

---



Pierre Cardin, Paris. *Coatdress, Haute Couture 1951, Cotton.*

**YVES SAINT LAURENT, PARIS**

*Ensemble: Tunic and Pants (detail), Haute Couture Fall-Winter 1969, Look 34*

---



Yves Saint Laurent, Paris, *Ensemble: Tunic and Pants (detail), Haute Couture Fall-Winter 1969, Look 34.* Synthetic lamé by Abraham (textile house), Paris, with beading by Pierre Mesrine (embroidery house), Paris. Prototype (original runway piece).

**VALENTINO GARAVANI FOR VALENTINO, ROME**

*Ensemble: Dress and Overblouse, about 1968*

---



Valentino Garavani for Valentino, Rome. *Ensemble: Dress and Overblouse, about 1968, Silk and synthetic net with rhinestones, beads, and sequins.* Véronique Peck Collection at the Denver Art Museum: Gift of Cecilia Peck Voll.

**HUBERT DE GIVENCHY FOR GIVENCHY, PARIS**

*Dress, Haute Couture Fall-Winter 1959*

---



Hubert de Givenchy for Givenchy, Paris. *Dress, Haute Couture Fall-Winter 1959, Silk*

**YVES SAINT LAURENT**

*Sketch and fabric swatch of a dress, Haute*

*Couture Spring-Summer 1969, Look 80*

---



Yves Saint Laurent, *sketch and fabric swatch of a dress, Haute Couture Spring-Summer 1969, Look 80.*